



GLOBE[®]

環球腳輪

GLOBE CASTOR

物流設備親密的伙伴



中國廣東省佛山市南海區環球工業腳輪廠
Globe Industrial Castors Factory, Nanhai District, Foshan City, Guangdong, PRC

ED1系列-平底型-活动式/固定式 ED1 Series-Top plate type-Swivel/Rigid



活动
Swivel



固定
Rigid



双刹活动
Swivel with dual brake



边刹活动
Swivel with unilateral brake

规格 Size	编号 Code No				轮径 Excl. diameter (mm)	轮宽 Wheel width (mm)	承载 load capacity (kg)	单轮材料 Single wheel material	轴承 Bearing	安装 高度 Setting height (mm)	活动转动 半径 Swivel radius of rotation (mm)	双刹转动 半径 Dual brake radius of rotation (mm)	底板 Top plate size (mm)	孔距 Aperture (mm)	孔径 Pitch (mm)
	活动 Swivel	固定 Rigid	双刹活动 Swivel with dual brake	边刹活动 Swivel with unilateral brake											
3"	ED01-11-075S-311	ED01-11-075R-311	ED01-11-075SA-311	ED01-11-075SB-311	75	28	70	高强度聚氨脂 High-strength polyurethane	滚珠 Bearing ball	107	78	115	94×67	73×45	11×9
	ED01-11-075S-208	ED01-11-075R-208	ED01-11-075SA-208	ED01-11-075SB-208			80	美力 Meili							
	ED01-11-075S-309	ED01-11-075R-309	ED01-11-075SA-309	ED01-11-075SB-309			60	超静聚氨脂 Super-muting polyurethane							
	ED01-11-075S-502	ED01-11-075R-502	ED01-11-075SA-502	ED01-11-075SB-502			60	高强度人造胶 High-strength artificial rubber							
4"	ED01-11-100S-311	ED01-11-100R-311	ED01-11-100SA-311	ED01-11-100SB-311	100	28	80	高强度聚氨脂 High-strength polyurethane	滚珠 Bearing ball	132	90	115	94×67	73×45	11×9
	ED01-11-100S-208	ED01-11-100R-208	ED01-11-100SA-208	ED01-11-100SB-208			110	美力 Meili							
	ED01-11-100S-309	ED01-11-100R-309	ED01-11-100SA-309	ED01-11-100SB-309			70	超静聚氨脂 Super-muting polyurethane							
	ED01-11-100S-502	ED01-11-100R-502	ED01-11-100SA-502	ED01-11-100SB-502			70	高强度人造胶 High-strength artificial rubber							
5"	ED01-11-125S-311	ED01-11-125R-311	ED01-11-125SA-311	ED01-11-125SB-311	125	30	100	高强度聚氨脂 High-strength polyurethane	滚珠 Bearing ball	158	105	115	94×67	73×45	11×9
	ED01-11-125S-208	ED01-11-125R-208	ED01-11-125SA-208	ED01-11-125SB-208			120	美力 Meili							
	ED01-11-125S-309	ED01-11-125R-309	ED01-11-125SA-309	ED01-11-125SB-309			80	超静聚氨脂 Super-muting polyurethane							
	ED01-11-125S-502	ED01-11-125R-502	ED01-11-125SA-502	ED01-11-125SB-502			80	高强度人造胶 High-strength artificial rubber							



高强度聚氨脂轮
High-strength polyurethane wheel



超静聚氨脂轮
Super-muting polyurethane wheel



美力轮
Meili wheel

高强度人造胶
High-strength artificial rubber

ED1系列-空心钉型 ED1 Series-Bolt Hole-Swivel


 空心钉
 Bolt Hole

 双刹空心钉
 Bolt Hole with dual brake

 边刹空心钉
 Bolt Hole with unilateral brake

规格 Size	编号 Code No			轮径 Wheel diameter (mm)	轮宽 Wheel width (mm)	承载 Load capacity (kg)	单轮材料 Single wheel material	轴承 Bearing	安装 高度 Setting height (mm)	活动转 动半径 Swivel Radius of rotation (mm)	双刹转 动半径 Dual brake Radius of rotation (mm)	螺丝 规格 Screw spec (mm)	孔径 Pitch (mm)
	空心钉 Bolt Hole	双刹空心钉 Bolt Hole with dual brake	边刹空心钉 Bolt Hole with unilateral brake										
3"	ED01-11-075PS-311	ED01-11-075PA-311	ED01-11-075PB-311	75	28	70	高强度聚氨脂 High-strength polyurethane	滚珠 Ball bearing	104	78	115	12×35	Ø12
	ED01-11-075PS-208	ED01-11-075PA-208	ED01-11-075PB-208			80	美力 Meili						
	ED01-11-075PS-309	ED01-11-075PA-309	ED01-11-075PB-309			60	超静聚氨脂 Super-muting polyurethane						
	ED01-11-075P-502	ED01-11-075PA-502	ED01-11-075PB-502			60	高强度人造胶 High-strength artificial rubber						
4"	ED01-11-100PS-311	ED01-11-100PA-311	ED01-11-100PB-311	100	28	80	高强度聚氨脂 High-strength polyurethane	滚珠 Ball bearing	129	90	115	12×35	Ø12
	ED01-11-100PS-208	ED01-11-100PA-208	ED01-11-100PB-208			110	美力 Meili						
	ED01-11-100PS-309	ED01-11-100PA-309	ED01-11-100PB-309			70	超静聚氨脂 Super-muting polyurethane						
	ED01-11-100P-502	ED01-11-100PA-502	ED01-11-100PB-502			70	高强度人造胶 High-strength artificial rubber						
5"	ED01-11-125PS-311	ED01-11-125PA-311	ED01-11-125PB-311	125	30	100	高强度聚氨脂 High-strength polyurethane	滚珠 Ball bearing	154	105	115	12×35	Ø12
	ED01-11-125PS-208	ED01-11-125PA-208	ED01-11-125PB-208			120	美力 Meili						
	ED01-11-125PS-309	ED01-11-125PA-309	ED01-11-125PB-309			80	超静聚氨脂 Super-muting polyurethane						
	ED01-11-125P-502	ED01-11-125PA-502	ED01-11-125PB-502			80	高强度人造胶 High-strength artificial rubber						


 高强度聚氨脂轮
 High-strength polyurethane wheel

 超静聚氨脂轮
 Super-muting polyurethane wheel

 美力轮
 Meili wheel

 高强度人造胶
 High-strength artificial rubber

ED1系列-丝杆型 ED1 Series-Link pin type-Swivel



丝杆
Swivel with link pin



丝杆双刹
Swivel with dual brake



丝杆边刹
Swivel with dual brake

规格 Size	编号 Code No			轮径 Wheel diameter (mm)	轮宽 Wheel width (mm)	承载 Load capacity (kg)	单轮材料 Single wheel material	轴承 Bearing	安装高度 Setting height (mm)	丝杆活动 转动半径 Swivel Radius of rotation (mm)	丝杆双刹 转动半径 Dual brake Radius of rotation (mm)	丝杆规格 Link pin spec (mm)
	丝杆活动 Swivel with link pin	丝杆双刹 Swivel with dual brake	丝杆边刹 Swivel with dual brake									
3"	ED01-11-075M-311	ED01-11-075MA-311	ED01-11-075MB-311	75	28	70	高强度聚氨脂 High-strength polyurethane	滚珠 Bearing ball	110	78	115	12×25
	ED01-11-075M-208	ED01-11-075MA-208	ED01-11-075MB-208			80	美力 Meili					
	ED01-11-075M-309	ED01-11-075MA-309	ED01-11-075MB-309			60	超静聚氨脂 Super-muting polyurethane					
	ED01-11-075M-502	ED01-11-075MA-502	ED01-11-075MB-502			60	高强度人造胶 High-strength artificial rubber					
4"	ED01-11-100M-311	ED01-11-100MA-311	ED01-11-100MB-311	100	28	80	高强度聚氨脂 High-strength polyurethane	滚珠 Bearing ball	137	90	115	12×25
	ED01-11-100M-208	ED01-11-100MA-208	ED01-11-100MB-208			110	美力 Meili					
	ED01-11-100M-309	ED01-11-100MA-309	ED01-11-100MB-309			70	超静聚氨脂 Super-muting polyurethane					
	ED01-11-100M-502	ED01-11-100MA-502	ED01-11-100MB-502			70	高强度人造胶 High-strength artificial rubber					
5"	ED01-11-125M-311	ED01-11-125MA-311	ED01-11-125MB-311	125	30	100	高强度聚氨脂 High-strength polyurethane	滚珠 Bearing ball	160	105	115	12×25
	ED01-11-125M-208	ED01-11-125MA-208	ED01-11-125MB-208			120	美力 Meili					
	ED01-11-125M-309	ED01-11-125MA-309	ED01-11-125MB-309			80	超静聚氨脂 Super-muting polyurethane					
	ED01-11-125M-502	ED01-11-125MA-502	ED01-11-125MB-502			80	高强度人造胶 High-strength artificial rubber					



高强度聚氨脂轮
High-strength polyurethane wheel



超静聚氨脂轮
Super-muting polyurethane wheel



美力轮
Meili wheel

高强度人造胶
High-strength artificial rubber

简介

Brief Introduction

环球工业脚轮厂是专业生产各类脚轮的生产商，自1988年创立以来，十多年间积累丰富专业知识，不断开发研究、创新，已研制出八大系列1000多个品种。环球采用先进的设备、最新的科技，最好的材料保证脚轮使用灵活方便，经久耐用。在不同的场合具有耐磨、耐撞击、抗化学品腐蚀、耐低温、耐高温、行驶无轮印、保护地板、噪音小宁静的性能。广泛用于各行业、产品畅销国内外市场。产品产量、质量居同行业领先地位。还可根据用户需要，提供价廉物美、产品配套专用脚轮。

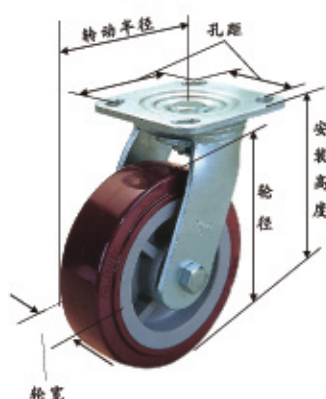
Global Industrial Castor Factory is a professional manufacturer specialized in the production of various casters. It has accumulated rich professional knowledge during the past fourteen years since its establishment in 1988 and produced over 1000 specifications of eight series upon constant development, research and innovation. Global Industrial Castor Factory adopts advanced equipment, the latest technology and the best materials to ensure the flexible and convenient operation and high durability of castor with good performances including wear-resistant, impact-resistant, chemical corrosion resistant, low temperature resistant, free of trace of movement, floor-protected and quite with low noise. Products are widely used in many industries and are well sold in domestic and international markets, taking a leading place in output and quality among the same trade. Castors of high quality and low price and designed for specific products are available subject to the demand of customer.

满足用户的需要是环球首要的宗旨！

Satisfaction of the need of customer is the first task of Global!

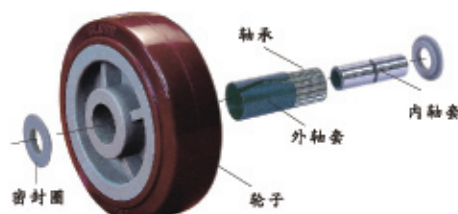
脚轮分解图

castor terms



滚柱单轮分解图

Roller bearing wheel terms



滚珠单轮分解图

Ball bearing wheel terms



脚轮性能特点：Properties of castor

性能特点 Properties	单轮材料 Monocaster Materials						
	尼龙 Nylon	超级聚氨脂 Super polyurethane	高强度聚氨脂 High-strength polyurethane	高强度人造胶 High-strength artificial rubber	钢铁 Steel	耐高温轮 High-heat resistant Castor	橡胶 Rubber
承载 (公斤) Load (kg)	10~200	10~1000	10~1000	10~600	10~1200	40~1200	40~350
适用温度 (°C) Applicable temperature (°C)	-30~90	-36~90	-36~90	-45~90	-50~600	-5~275	-36~85
轮硬度 Hardness		95 (±5) A	95 (±5) A	75 (±5) A			90 (±5) A
转动灵活性 Rotary flexibility	优 Excellent	优 Excellent	优 Excellent	优 Excellent	优 Excellent	优 Excellent	一般 Moderate
转动宁静 Rotary quietness	一般 Moderate	优 Excellent	优 Excellent	优 Excellent	差 Poor	良 Good	优 Excellent
地板保护 Floor protection	一般 Moderate	优 Excellent	优 Excellent	优 Excellent	差 Poor	良 Good	一般 Moderate
无轮印 Free of tract	无 No	无 No	无 No	无 No	无 No	无 No	有 Yes
耐冲击 Impact resistant	优 Excellent	优 Excellent	优 Excellent	优 Excellent	良 Good	优 Excellent	一般 Moderate
耐磨损 Wear resistant	优 Excellent	优 Excellent	优 Excellent	优 Excellent	优 Excellent	优 Excellent	差 Poor
防水性能 Waterproof	优 Excellent	优 Excellent	优 Excellent	优 Excellent	差 Poor	优 Excellent	良 Good
防化学品性能 Chemical resistant	优 Excellent	优 Excellent	优 Excellent	优 Excellent	良 Good	优 Excellent	差 Poor

怎样选择适合你使用的脚轮 (以下介绍几种主要考虑因素)

一、如何选择适当的车轮

- 1、选择车轮材质：首先考虑使用路面的大小，障碍物、使用场地上残留物质（如铁屑、油脂），所处环境状况（如高温、常温或低温）及车轮所能承载的重量等不同条件来决定选择适合的车轮材质。例如：橡胶轮不能耐酸、油脂和化学品，超级聚氨酯轮、高强度聚氨酯轮、尼龙轮、钢铁轮和耐高温轮则能适用于不同的特殊环境。
- 2、计算承载重量：为了能够计算出各种脚轮需要的载重能力，必须知道运输设备自重、最大荷重和所用单轮和脚轮的数量。一个单轮或脚轮所需的载重能力计算如下： $T = \frac{E+Z}{M} \times N$ ；T = 单轮或脚轮所需承载重量；E = 运输设备的自重；Z = 最大荷重；M = 所用单轮和脚轮的数量；N = 安全系数(约1.3 - 1.5)。
- 3、决定轮径大小：通常车轮直径愈大愈容易推动，荷重能力也愈大同时也较能保护地面不受损坏，轮径大小的选择首先应考虑承载的重量和荷重下搬运车的起动力来决定。
- 4、车轮材质软硬的选择：通常车轮有尼龙轮、超级聚氨酯轮、高强度聚氨酯轮、高强度人造胶轮、铁轮、打气轮。超级聚氨酯轮、高强度聚氨酯轮不论在室内室外的地面行驶，都能满足你的搬运要求；高强度人造胶轮则能适用于酒店、医疗器械、楼层、木地板、瓷砖地面等要求行走时噪音小宁静的地面上行驶；尼龙轮、铁轮适用于地面不平或地面上有铁屑等物质的场地；而打气轮则适用于轻荷重及路面不平坦的场合。
- 5、转动灵活性：单轮越大转动就越省力，滚柱轴承能载较重的负载，转动时阻力较大；单轮安装上优质的（轴承钢）滚珠轴承，能承载较重的负荷，转动更轻便，灵活宁静。
- 6、温度状况：严寒和高温的场合对脚轮的影响很大，聚氨酯轮在零下45℃下的低温，转动灵活自如，耐高温轮在高温275℃下转动轻便。

二、如何选择适当的轮架

- 1、通常选择适合的轮架首先考虑脚轮承载的重量如超市、学校、医院、办公楼、酒店等地方，由于地板良好，平滑且搬运的货物较轻，（每只脚轮承载在10-140kg），适合选择以薄钢板(2-4mm)冲压成形的电镀轮架，其轮架轻，操作灵活，静音又美观，此电镀轮架依滚珠排列分为双排珠和单排珠。若常移动或搬运时应用双排珠。
- 2、在工厂和仓库等场所，货物搬运很频繁且负荷较重(每只脚轮承载在280-420kg)则适合选用以厚钢板(5-6mm)冲压热锻并焊接的双排滚珠的轮架。
- 3、若用于搬运重物如纺织工厂、汽车工厂、机械工厂等地方，由于荷重大且工厂内行走距离长(每只脚轮承载在350-1200kg)，故应选择以厚钢板(8-12mm)切割后焊接的轮架，活动轮架使用平面滚珠轴承和滚珠轴承在底板上，使脚轮能承受重负荷，转动灵活、抗撞击等功能。

How to choose proper castor (important facts to be considered)

1. How to choose proper castor

1. Decide the composition of castor: Consideration on the size of road, obstacles, remaining substances on application area (such as iron scraps, grease), surrounding conditions (such as high temperature, normal temperature or low temperature) as well as the load capacity of castor should be taken into during the decision-making for proper composition of castor. For example, rubber castor is non-resistant to acid, grease and chemical, while super polyurethane castor, high strength polyurethane castor, nylon castor, steel castor and high-heat castor are applicable to different special areas.
2. Calculate load capacity: To calculate the load capacity of various castors, the net weight of transported equipment, maximum load and number of monocaster or castor used must be provided. Load capacity required by a monocaster or castor is calculated as follows: $T = (E+Z) / M \times N$; T=load capacity required by a monocaster or castor; E=net weight of transported equipment; Z=Maximum load; M= number of monocaster or castor used; N=safety coefficient (about 1.3-1.5).
3. Decide castor diameter: The larger the diameter of castor, the easier the movement and the larger the load ability, which can also protect the floor from any damage. The selection of castor diameter should be decided by the load capacity and the starting thrust of conveyor with load.
4. Decide hardness of castor: Options include nylon castor, super polyurethane castor, high-strength polyurethane castor, high-strength artificial rubber castor, iron castor and inflated castor. Super polyurethane castor and high-strength polyurethane castor can meet your transportation requirements for indoor or outdoor movement. High-strength artificial rubber castor is applicable to hotel, medical equipment, floor, wood flooring and ground paved with ceramic tiles on which movement is required to be quiet with low noise. Nylon castor and iron castor are applicable to uneven ground or ground with iron scraps. Inflated castor is applicable to light load requirement and ground with soft and uneven surface.
5. Rotary flexibility: The larger the monocaster the more energy saved during rotation. Roller bearing has a higher load and larger resistance during rotation. Monocaster with high quality (bearing steel) ball bearing has a higher load, lighter, more flexible and quieter rotation.
6. Temperature condition: The operation of castor is greatly affected under low temperature and high temperature, except polyurethane castor, which has flexible and free rotation under low temperature of -45℃ and high-heat resistant castor, which has easy rotation under high temperature of 275℃.

2. How to choose proper castor holder

1. Load of castor should be firstly considered in selection. For example, for supermarket, school, hospital, office and hotel where the floor condition is good and smooth and the cargo carried is light relatively (load on each castor is 10-140kg), electroplated castor holder made of thin steel sheet (2-4mm) after stamping would be a proper choice. This kind of holder is light-weighted, flexible-operated, mute and beautiful and is classified into duplex ball and simplex ball according to the arrangement of balls. Duplex ball type is recommended for frequent movement or transportation.
2. As for factory and warehouse, where cargo handling is very frequent and the load is heavy (load on each castor is 280-420kg), duplex ball castor holder made of thick steel plate (5-6mm) after stamping, hot die and welding would be a proper choice.
3. As for textile mill, motor works and machinery plant where heavy cargo is handled, castor holder made of thick steel plate (8-12mm) after cutting and welding should be chosen due to the heavy load and long distance of movement inside the plant (load on each castor is 350-1200 kg). The movable castor holder mounted on the bottom plate with flange ball bearing and ball bearing ensures high load capacity, flexible rotation and impact resistance of castor.

三、选择适合的轴承

- 1、特尔灵轴承：特尔灵是特殊工程塑料，适用于潮湿和腐蚀性的地方，转动的灵活性一般，阻力较大。
- 2、滚柱轴承：经过热处理的滚柱轴承能承载较重的负荷，转动灵活性一般。
- 3、滚珠轴承：选用优质轴承钢制作而成的滚珠轴承，能承载较重的负荷，适用于要求转动灵活和宁静的场合。
- 4、平面轴承：适合于高和特高负荷及高转速的场合。

3. How to choose proper bearing

1. Telling bearing: Telling bearing made of special engineering plastics is applicable to humid and corrosive place, with moderate rotary flexibility and hing resistance force.
2. Roller bearing: Roller bearing with heat treatment can bear a high load, with moderate rotary flexibility.
3. Ball bearing: Ball bearing made of high quality bearing steel can bear a high load and is applicable to place demanding flexible and quiet rotation.
4. Flat bearing: Flat bearing is applicable to place of high and super high load and high rotary speed.



1. 特尔灵轴承 Derlin bearing



2. 滚柱轴承 Roller bearing



3. 滚珠轴承 Ball bearing



4. 平面轴承 Flat bearing



A、高强度工程塑料轮芯
(用于2、3系列)
High strength engineering
plastic castor core



B、高强度工程塑料轮芯
(用于4、5、6和7系列)
High strength engineering
plastic castor core

为您准备的各种材质单轮 Different material wheels for you



2202248
尼龙轮
Nylon wheel



2202320
铸铁轮
Cast-iron wheel



2202356
高强度人造胶轮
High-strength artificial rubber wheel



2202392
超级聚氨酯轮
Super Polyurethane wheel



3303318
软橡胶轮
Soft rubber wheel



3303360
尼龙轮
Nylon wheel



3303462
铸铁轮
Cast-iron wheel



3303495
高强度聚氨酯轮
High-strength polyurethane wheel



3303519
高强度人造胶轮
High-strength artificial rubber wheel



3303552
超级聚氨酯轮
Super Polyurethane wheel



3303647
V型槽铸铁轮
V-Groove cast-iron wheel



3303689
购物车轮
Shopping trolley wheel



3303817B
低重心机器轮
Low-barycentre wheel



3303821
购物车电梯轮
Shopping cart wheel



3303839
耐高温轮
High-heat resistant wheel



3303895
高级设备轮
High-class instrument wheel



3304063
高级设备轮
High-class instrument wheel



3304007
高级设备轮
High-class instrument wheel



4404425
尼龙轮
Nylon wheel



4404473
铸铁轮
Cast-iron wheel



4404492
高强度聚氨酯轮
High-strength polyurethane wheel



4404508
高强度人造胶轮
High-strength artificial rubber wheel



4404548
超级聚氨酯轮
Super Polyurethane wheel



4404743
高强度聚氨酯烽火轮
High-strength polyurethane flame wheel



4404483
V型槽铸铁轮
V-Groove cast-iron wheel



4404599
橡胶轮
Rubber wheel



4404631
铁芯聚氨酯轮
Iron centre polyurethane wheel



4404647
高强度聚氨酯轮
High-strength polyurethane wheel



4404663
高强度人造胶轮
High-strength artificial rubber wheel



4404679
超级聚氨酯轮
Super Polyurethane wheel



4404759
超級聚氨酯輪
Super polyurethane wheel



4404775
超級聚氨酯輪
Super polyurethane wheel



4404791
耐高溫輪
High-heat resistant wheel



4404530D
打氣輪
Pneumatic wheel



4404714
高彈性發泡輪
High-elasticity foam wheel



4404825
超級聚氨酯輪
Super polyurethane wheel



5505512
高强度尼龙輪
High-strength nylon wheel



5505536
超級聚氨酯輪
Super polyurethane wheel



5505560
鐵芯聚氨酯輪
Iron centre polyurethane wheel



5505584
鑄鐵輪
Cast-iron wheel

為您準備的各種剎制腳輪 Different caster brakes for you



2202402
平底邊剎制輪
Top plate with side brake



2202270
絲杆邊剎制輪
Threaded stem with side brake



3303561
平底雙剎制輪
Top plate with dual brake



3303501B
平底尼龙剎制輪
Top plate with nylon dual brake



3304093
絲杆雙剎制輪
Threaded stem with dual brake



3303341B
絲杆尼龙剎制輪
Threaded stem with nylon dual brake



3303525A
平底邊剎制輪
Top plate with side brake



3304044
絲杆邊剎制輪
Threaded stem with side brake



4404554
平底邊剎制輪
Top plate with side brake



4404820
平底雙剎制輪
Top plate with dual brake



絲杆邊剎制輪
Threaded stem with side brake



4404734
鷹架剎制輪
Scaffold caster

2系列—平底型—活动式 2Series-Top plate type-Swivel

轮径 Wheel Dia. (mm)	轮宽 Wheel width (mm)	承载 Load capacity (kg)	单轮材料 Material of Wheel	轴承 Bearing	编号 Code No.	重量 N.W. (kg)	安装高度 Load height (mm)	底板规格 Top plate size (mm)	孔距 Bolt hole spacing (mm)	孔径 Bolt hole Dia. (mm)	转动半径 Swivel radius (mm)
25	13	10	尼龙 Nylon	轴承 Bushing	2202237	0.04	35	38X33	30X24	4.1	25
		10	铸铁 Cast-iron	轴承 Bushing	2202309	0.07					
		8	高强度人造胶 High-strength artificial rubber	轴承 Bushing	2202345						
		10	超级聚氨酯 Super polyurethane	轴承 Bushing	2202381						
32	13	16	尼龙 Nylon	轴承 Bushing	2202240	0.05	43	38X33	30X24	4.1	30
		16	铸铁 Cast-iron	轴承 Bushing	2202312	0.08					
		13	高强度人造胶 High-strength artificial rubber	轴承 Bushing	2202348						
38	17	20	尼龙 Nylon	轴承 Bushing	2202243	0.07	50	46X38	36X28	5.1	36
		20	铸铁 Cast-iron	轴承 Bushing	2202315	0.15					
		17	高强度人造胶 High-strength artificial rubber	轴承 Bushing	2202351						
		20	超级聚氨酯 Super polyurethane	轴承 Bushing	2202387						
50	22	30	尼龙 Nylon	轴承 Bushing	2202246	0.15	65	59X47	46X35	6.1	48
		30	铸铁 Cast-iron	轴承 Bushing	2202318	0.26					
		25	高强度人造胶 High-strength artificial rubber	轴承 Bushing	2202354						
		30	超级聚氨酯 Super polyurethane	轴承 Bushing	2202390						
65	27	40	尼龙 Nylon	轴承 Bushing	2202249	0.24	82	70X58	55X42	8.1	61
		40	铸铁 Cast-iron	轴承 Bushing	2202321	0.53					
		35	高强度人造胶 High-strength artificial rubber	轴承 Bushing	2202357						
		40	超级聚氨酯 Super polyurethane	轴承 Bushing	2202393						
75	27	50	尼龙 Nylon	轴承 Bushing	2202252	0.27	93	70X58	55X42	8.1	66
		50	铸铁 Cast-iron	轴承 Bushing	2202324	0.58					
		45	高强度人造胶 High-strength artificial rubber	轴承 Bushing	2202360						
		50	超级聚氨酯 Super polyurethane	轴承 Bushing	2202396						



2202390



2202354



2202246

2系列—平底型—固定式 2Series-Top plate type-Rigid

轮径 Wheel Dia. (mm)	轮宽 Wheel width (mm)	承载 Load capacity (kg)	单轮材料 Material of Wheel	轴承 Bearing	编号 Code No.	重量 N.W. (kg)	安装高度 Load height (mm)	底板规格 Top plate size (mm)	孔距 Bolt hole spacing (mm)	孔径 Bolt hole Dia. (mm)
25	13	10	尼龙 Nylon	轴承 Bushing	2202238	0.02	35	36X20	29X13	4.1
		10	铸铁 Cast-iron	轴承 Bushing	2202310	0.05				
		8	高强度人造胶 High-strength artificial rubber	轴承 Bushing	2202346					
		10	超级聚氨酯 Super polyurethane	轴承 Bushing	2202382					
32	13	16	尼龙 Nylon	轴承 Bushing	2202241	0.03	43	36X20	29X13	4.1
		16	铸铁 Cast-iron	轴承 Bushing	2202313	0.06				
		13	高强度人造胶 High-strength artificial rubber	轴承 Bushing	2202349					
38	17	20	尼龙 Nylon	轴承 Bushing	2202244	0.05	50	46X25	36X15	5.1
		20	铸铁 Cast-iron	轴承 Bushing	2202316	0.12				
		17	高强度人造胶 High-strength artificial rubber	轴承 Bushing	2202352					
		20	超级聚氨酯 Super polyurethane	轴承 Bushing	2202388					
50	22	30	尼龙 Nylon	轴承 Bushing	2202247	0.10	65	58X40	45X25	6.1
		30	铸铁 Cast-iron	轴承 Bushing	2202319	0.21				
		25	高强度人造胶 High-strength artificial rubber	轴承 Bushing	2202355					
65	27	40	尼龙 Nylon	轴承 Bushing	2202250	0.16	82	70X47	55X28	8.1
		40	铸铁 Cast-iron	轴承 Bushing	2202322	0.45				
		35	高强度人造胶 High-strength artificial rubber	轴承 Bushing	2202358					
		40	超级聚氨酯 Super polyurethane	轴承 Bushing	2202394					
75	27	50	尼龙 Nylon	轴承 Bushing	2202253	0.18	93	70X47	55X28	8.1
		50	铸铁 Cast-iron	轴承 Bushing	2202325	0.50				
		45	高强度人造胶 High-strength artificial rubber	轴承 Bushing	2202361					
		50	超级聚氨酯 Super polyurethane	轴承 Bushing	2202397					



2202391



2202247



2202319

2系列—平底型—单边刹制式 2Series—Top plate type— with side brake

2202402

2202366

2202258

轮径 Wheel Dia. (mm)	轮宽 Wheel width (mm)	承载 Load capacity (kg)	单轮材料 Material of Wheel	轴承 Bearing	编号 Code No.	重量 N.W. (kg)	安装高度 Load height (mm)	底板规格 Top plate size (mm)	孔距 Bolt hole spacing (mm)	孔径 Bolt hole Dia. (mm)	转动半径 Swivel radius (mm)
38	17	20	尼龙 Nylon	轴承 Bushing	2202257	0.08	50	46X38	36X28	5.1	36
		20	铸铁 Cast-iron	轴承 Bushing	2202329	0.16					
		17	高强度人造胶 High-strength artificial rubber	轴承 Bushing	2202365						
		20	超级聚氨酯 Super polyurethane	轴承 Bushing	2202401						
50	22	30	尼龙 Nylon	轴承 Bushing	2202258	0.17	65	59X47	46X35	6.1	48
		30	铸铁 Cast-iron	轴承 Bushing	2202330	0.28					
		25	高强度人造胶 High-strength artificial rubber	轴承 Bushing	2202366						
		30	超级聚氨酯 Super polyurethane	轴承 Bushing	2202402						
65	27	40	尼龙 Nylon	轴承 Bushing	2202259	0.27	82	70X58	55X42	8.1	61
		40	铸铁 Cast-iron	轴承 Bushing	2202331	0.56					
		35	高强度人造胶 High-strength artificial rubber	轴承 Bushing	2202367						
		40	超级聚氨酯 Super polyurethane	轴承 Bushing	2202403						
75	27	50	尼龙 Nylon	轴承 Bushing	2202260	0.30	93	70X58	55X42	8.1	66
		50	铸铁 Cast-iron	轴承 Bushing	2202332	0.60					
		45	高强度人造胶 High-strength artificial rubber	轴承 Bushing	2202368						
		50	超级聚氨酯 Super polyurethane	轴承 Bushing	2202404						


2202408

2202264

2202336
2系列—丝杆型 2Series—Threaded stem type

轮径 Wheel Dia. (mm)	轮宽 Wheel width (mm)	承载 Load capacity (Kg)	单轮材料 Material of Wheel	轴承 Bearing	编号 Code No.	重量 N.W. (Kg)	安装高度 Load height (mm)	丝杆规格 Threaded stem size (mm)	转动半径 Swivel radius (mm)
25	13	10	尼龙 Nylon	轴承 Bushing	2202261	0.05	39	8X15	25
		10	铸铁 Cast-iron	轴承 Bushing	2202333	0.07			
		8	高强度人造胶 High-strength artificial rubber	轴承 Bushing	2202369				
		10	超级聚氨酯 Super polyurethane	轴承 Bushing	2202405				
32	13	16	尼龙 Nylon	轴承 Bushing	2202262	0.06	47	8X15	30
		16	铸铁 Cast-iron	轴承 Bushing	2202334	0.08			
		13	高强度人造胶 High-strength artificial rubber	轴承 Bushing	2202370				
		16	超级聚氨酯 Super polyurethane	轴承 Bushing	2202406				
38	17	20	尼龙 Nylon	轴承 Bushing	2202263	0.09	56	8X15	36
		20	铸铁 Cast-iron	轴承 Bushing	2202335	0.16			
		17	高强度人造胶 High-strength artificial rubber	轴承 Bushing	2202371				
		20	超级聚氨酯 Super polyurethane	轴承 Bushing	2202407				
50	22	30	尼龙 Nylon	轴承 Bushing	2202264	0.15	68	10X15 (12X25)	48
		30	铸铁 Cast-iron	轴承 Bushing	2202336	0.27			
		25	高强度人造胶 High-strength artificial rubber	轴承 Bushing	2202372				
		30	超级聚氨酯 Super polyurethane	轴承 Bushing	2202408				
65	27	40	尼龙 Nylon	轴承 Bushing	2202265	0.25	85	12X25 (12X35)	61
		40	铸铁 Cast-iron	轴承 Bushing	2202337	0.51			
		35	高强度人造胶 High-strength artificial rubber	轴承 Bushing	2202373				
		40	超级聚氨酯 Super polyurethane	轴承 Bushing	2202409				
75	27	50	尼龙 Nylon	轴承 Bushing	2202266	0.27	95	12X25 (12X35)	66
		50	铸铁 Cast-iron	轴承 Bushing	2202338	0.57			
		45	高强度人造胶 High-strength artificial rubber	轴承 Bushing	2202374				
		50	超级聚氨酯 Super polyurethane	轴承 Bushing	2202410				

2系列—丝杆型—单边刹制式 2Series—Threaded stem type— with side brake

轮径 Wheel Dia. (mm)	轮宽 Wheel width (mm)	承载 Load capacity (kg)	单轮材料 Material of Wheel	轴承 Bearing	编号 Code No.	重量 N.W. (kg)	安装高度 Load height (mm)	丝杆规格 Threaded stem size (mm)	转动半径 Swivel radius (mm)
38	17	20	尼龙 Nylon	轴套 Bushing	2202269	0.10	56	8X15	36
		20	铸铁 Cast-iron	轴套 Bushing	2202341	0.18			
		17	高强度人造胶 High-strength artificial rubber	轴套 Bushing	2202377				
		20	超级聚氨酯 Super polyurethane	轴套 Bushing	2202413				
50	22	30	尼龙 Nylon	轴套 Bushing	2202270	0.17	68	10X15 (12X25)	48
		30	铸铁 Cast-iron	轴套 Bushing	2202342	0.30			
		25	高强度人造胶 High-strength artificial rubber	轴套 Bushing	2202378				
		30	超级聚氨酯 Super polyurethane	轴套 Bushing	2202414				
65	27	40	尼龙 Nylon	轴套 Bushing	2202271	0.28	85	12X25 (12X35)	61
		40	铸铁 Cast-iron	轴套 Bushing	2202343	0.55			
		35	高强度人造胶 High-strength artificial rubber	轴套 Bushing	2202379				
		40	超级聚氨酯 Super polyurethane	轴套 Bushing	2202415				
75	27	50	尼龙 Nylon	轴套 Bushing	2202272	0.30	95	12X25 (12X35)	66
		50	铸铁 Cast-iron	轴套 Bushing	2202344	0.61			
		45	高强度人造胶 High-strength artificial rubber	轴套 Bushing	2202380				
		50	超级聚氨酯 Super polyurethane	轴套 Bushing	2202416				



2202414



2202378



2202270

3系列低重心尼龙轮—平底型—活动式 3Series—Low barycentre nylon caster — Top plate type— Swivel

轮径 Wheel Dia. (mm)	轮宽 Wheel width (mm)	承载 Load capacity (kg)	单轮材料 Material of Wheel	轴承 Bearing	编号 Code No.	重量 N.W. (kg)	安装高度 Load height (mm)	底板规格 Top plate size (mm)	孔距 Bolt hole spacing (mm)	孔径 Bolt hole Dia. (mm)	转动半径 Swivel radius (mm)
65	40	150	尼龙 Nylon	滚柱 Roller bearing	3303816	0.86	94	95X67	73X45	9	57
75	46	200	尼龙 Nylon	滚柱 Roller bearing	3303817	1.03	103	105X80	81X59	9	62



3303817

3系列低重心尼龙轮—平底型—固定式 3Series—Low barycentre nylon caster — Top plate type— Rigid

轮径 Wheel Dia. (mm)	轮宽 Wheel width (mm)	承载 Load capacity (kg)	单轮材料 Material of Wheel	轴承 Bearing	编号 Code No.	重量 N.W. (kg)	安装高度 Load height (mm)	底板规格 Top plate size (mm)	孔距 Bolt hole spacing (mm)	孔径 Bolt hole Dia. (mm)
65	40	150	尼龙 Nylon	滚柱 Roller bearing	3303816A		94	95X67	73X45	9
75	46	200	尼龙 Nylon	滚柱 Roller bearing	3303817A		103	105X80	81X59	9



3303817A

3系列—平底型—活动式 3Series-Top plate type-Swivel

3303550

3303493

3303517

3303358

3303316

轮径 Wheel Dia. (mm)	轮宽 Wheel width (mm)	承载 Load capacity (kg)	单轮材料 Material of Wheel	轴承 Bearing	编号 Code No.	重量 N.W. (kg)	安装高度 Load height (mm)	底板规格 Top plate size (mm)	孔距 Ball hole spacing (mm)	孔径 Ball hole Dia. (mm)	转动半径 Swivel radius (mm)
65	32	65	软橡胶 Rubber	轴套 Bushing	3303307		95	95X67	73X45	8.5	69
		61	高强度人造胶 High-strength artificial rubber	滚珠 Ball bearing	3303618						
			尼龙 Nylon	滚珠 Ball bearing	3303349						
			铸铁 Cast-iron	轴套 Bushing	3303451						
		86	高强度聚氨酯 High-strength polyurethane	滚珠 Ball bearing	3303600						
			超级聚氨酯 Super polyurethane	滚珠 Ball bearing	3303541						
			耐高温 High-heat resistant	滚珠 Ball bearing	3303828						
75	32	90	软橡胶 Rubber	轴套 Bushing	3303310	0.78	107	95X67	73X45	8.5	74
		80	高强度人造胶 High-strength artificial rubber	滚珠 Ball bearing	3303511	0.78					
			尼龙 Nylon	滚珠 Ball bearing	3303352	0.77					
			铸铁 Cast-iron	轴套 Bushing	3303454	1.14					
		100	高强度聚氨酯 High-strength polyurethane	滚珠 Ball bearing	3303487	0.78					
			超级聚氨酯 Super polyurethane	滚珠 Ball bearing	3303544	0.78					
			耐高温 High-heat resistant	滚珠 Ball bearing	3303831	0.83					
90	32	95	软橡胶 Rubber	轴套 Bushing	3303313	0.89	120	95X67	73X45	8.5	81
		85	高强度人造胶 High-strength artificial rubber	滚珠 Ball bearing	3303514	0.85					
			尼龙 Nylon	滚珠 Ball bearing	3303355	0.83					
			铸铁 Cast-iron	轴套 Bushing	3303457	1.43					
		110	高强度聚氨酯 High-strength polyurethane	滚珠 Ball bearing	3303490	0.85					
			超级聚氨酯 Super polyurethane	滚珠 Ball bearing	3303547	0.85					
			耐高温 High-heat resistant	滚珠 Ball bearing	3303834	0.90					
100	32	100	软橡胶 Rubber	轴套 Bushing	3303316	0.96	130	95X67	73X45	8.5	86
		90	高强度人造胶 High-strength artificial rubber	滚珠 Ball bearing	3303517	0.88					
			尼龙 Nylon	滚珠 Ball bearing	3303358	0.86					
			铸铁 Cast-iron	轴套 Bushing	3303460	1.48					
		130	高强度聚氨酯 High-strength polyurethane	滚珠 Ball bearing	3303493	0.88					
			超级聚氨酯 Super polyurethane	滚珠 Ball bearing	3303550	0.88					
			耐高温 High-heat resistant	滚珠 Ball bearing	3303837	0.96					
125	32	105	软橡胶 Rubber	轴套 Bushing	3303319	1.21	154	95X67	73X45	8.5	98
		95	高强度人造胶 High-strength artificial rubber	滚珠 Ball bearing	3303520	1.03					
			尼龙 Nylon	滚珠 Ball bearing	3303361	0.96					
			铸铁 Cast-iron	轴套 Bushing	3303463	1.81					
		140	高强度聚氨酯 High-strength polyurethane	滚珠 Ball bearing	3303496	1.03					
			超级聚氨酯 Super polyurethane	滚珠 Ball bearing	3303553	1.03					
			耐高温 High-heat resistant	滚珠 Ball bearing	3303840	1.11					

3系列—平底型—固定式 3Series-Top plate type-Rigid

轮径 Wheel Dia. (mm)	轮宽 Wheel width (mm)	承载 Load capacity (kg)	单轮材料 Material of Wheel	轴承 Bearing	编号 Code No.	重量 N.W. (kg)	安装高度 Load height (mm)	底板规格 Top plate size (mm)	孔距 Bolt hole spacing (mm)	孔径 Bolt hole Dia. (mm)
65	32	65	软橡胶 Rubber	轴套 Bushing	3303308		95	95X67	73X45	8.5
		61	高强度人造胶 High-strength artificial rubber	滚珠 Ball bearing	3303619					
			尼龙 Nylon	滚珠 Ball bearing	3303350					
			铸铁 Cast-iron	轴套 Bushing	3303452					
		86	高强度聚氨酯 High-strength polyurethane	滚珠 Ball bearing	3303601					
			超级聚氨酯 Super polyurethane	滚珠 Ball bearing	3303542					
	耐高温 High-heat resistant	滚珠 Ball bearing	3303829							
75	32	90	软橡胶 Rubber	轴套 Bushing	3303311	0.54	107	95X67	73X45	8.5
		80	高强度人造胶 High-strength artificial rubber	滚珠 Ball bearing	3303512	0.53				
			尼龙 Nylon	滚珠 Ball bearing	3303353	0.52				
			铸铁 Cast-iron	轴套 Bushing	3303455	0.89				
		100	高强度聚氨酯 High-strength polyurethane	滚珠 Ball bearing	3303488	0.53				
			超级聚氨酯 Super polyurethane	滚珠 Ball bearing	3303545	0.53				
	耐高温 High-heat resistant	滚珠 Ball bearing	3303832	0.58						
90	32	95	软橡胶 Rubber	轴套 Bushing	3303314	0.64	120	95X67	73X45	8.5
		85	高强度人造胶 High-strength artificial rubber	滚珠 Ball bearing	3303515	0.61				
			尼龙 Nylon	滚珠 Ball bearing	3303356	0.59				
			铸铁 Cast-iron	轴套 Bushing	3303458	1.20				
		110	高强度聚氨酯 High-strength polyurethane	滚珠 Ball bearing	3303491	0.61				
			超级聚氨酯 Super polyurethane	滚珠 Ball bearing	3303548	0.61				
	耐高温 High-heat resistant	滚珠 Ball bearing	3303835	0.66						
100	32	100	软橡胶 Rubber	轴套 Bushing	3303317	0.71	130	95X67	73X45	8.5
		90	高强度人造胶 High-strength artificial rubber	滚珠 Ball bearing	3303518	0.63				
			尼龙 Nylon	滚珠 Ball bearing	3303359	0.61				
			铸铁 Cast-iron	轴套 Bushing	3303461	1.27				
		130	高强度聚氨酯 High-strength polyurethane	滚珠 Ball bearing	3303494	0.63				
			超级聚氨酯 Super polyurethane	滚珠 Ball bearing	3303551	0.63				
	耐高温 High-heat resistant	滚珠 Ball bearing	3303838	0.72						
125	32	105	软橡胶 Rubber	轴套 Bushing	3303320	0.96	154	95X67	73X45	8.5
		95	高强度人造胶 High-strength artificial rubber	滚珠 Ball bearing	3303521	0.77				
			尼龙 Nylon	滚珠 Ball bearing	3303362	0.72				
			铸铁 Cast-iron	轴套 Bushing	3303464	1.66				
		140	高强度聚氨酯 High-strength polyurethane	滚珠 Ball bearing	3303497	0.77				
			超级聚氨酯 Super polyurethane	滚珠 Ball bearing	3303554	0.77				
	耐高温 High-heat resistant	滚珠 Ball bearing	3303841	0.88						


3303551

3303518

3303359

3303461

3303838

3系列—平底型—雙剎制式 **3Series—Top plate type— with dual brake**

3303561

3303501

3303525

3303411

3303327

輪徑 Wheel Dia. (mm)	輪寬 Wheel width (mm)	承載 Load capacity (kg)	單輪材料 Material of Wheel	軸承 Bearing	編號 Code No.	重量 N.W. (kg)	安裝高度 Load height (mm)	底板規格 Top plate size (mm)	孔距 Bolt hole spacing (mm)	孔徑 Bolt hole Dia. (mm)	轉動半徑 Swivel radius (mm)
65	32	65	軟橡膠 Rubber	軸套 Bushing	3303324		95	95X67	73X45	8.5	69
		61	高強度人造膠 High-strength artificial rubber	滾珠 Ball bearing	3303623						
		86	尼龙 Nylon	滾珠 Ball bearing	3303408						
			鑄鐵 Cast-iron	軸套 Bushing	3303468						
			高強度聚氨酯 High-strength polyurethane	滾珠 Ball bearing	3303605						
			超級聚氨酯 Super polyurethane	滾珠 Ball bearing	3303558						
耐高溫 High-heat resistant	滾珠 Ball bearing	3303845									
75	32	90	軟橡膠 Rubber	軸套 Bushing	3303325	0.94	107	95X67	73X45	8.5	74
		80	高強度人造膠 High-strength artificial rubber	滾珠 Ball bearing	3303523	0.94					
		100	尼龙 Nylon	滾珠 Ball bearing	3303409	0.93					
			鑄鐵 Cast-iron	軸套 Bushing	3303469	1.28					
			高強度聚氨酯 High-strength polyurethane	滾珠 Ball bearing	3303499	0.94					
			超級聚氨酯 Super polyurethane	滾珠 Ball bearing	3303559	0.94					
耐高溫 High-heat resistant	滾珠 Ball bearing	3303846	0.98								
90	32	95	軟橡膠 Rubber	軸套 Bushing	3303326	1.04	120	95X67	73X45	8.5	81
		85	高強度人造膠 High-strength artificial rubber	滾珠 Ball bearing	3303524	1.00					
		110	尼龙 Nylon	滾珠 Ball bearing	3303410	0.98					
			鑄鐵 Cast-iron	軸套 Bushing	3303470	1.60					
			高強度聚氨酯 High-strength polyurethane	滾珠 Ball bearing	3303500	1.00					
			超級聚氨酯 Super polyurethane	滾珠 Ball bearing	3303560	1.00					
耐高溫 High-heat resistant	滾珠 Ball bearing	3303847	1.06								
100	32	100	軟橡膠 Rubber	軸套 Bushing	3303327	1.12	130	95X67	73X45	8.5	86
		90	高強度人造膠 High-strength artificial rubber	滾珠 Ball bearing	3303525	1.04					
		130	尼龙 Nylon	滾珠 Ball bearing	3303411	1.02					
			鑄鐵 Cast-iron	軸套 Bushing	3303471	1.64					
			高強度聚氨酯 High-strength polyurethane	滾珠 Ball bearing	3303501	1.04					
			超級聚氨酯 Super polyurethane	滾珠 Ball bearing	3303561	1.04					
耐高溫 High-heat resistant	滾珠 Ball bearing	3303848	1.13								
125	32	105	軟橡膠 Rubber	軸套 Bushing	3303328	1.39	154	95X67	73X45	8.5	98
		95	高強度人造膠 High-strength artificial rubber	滾珠 Ball bearing	3303526	1.19					
		140	尼龙 Nylon	滾珠 Ball bearing	3303412	1.13					
			鑄鐵 Cast-iron	軸套 Bushing	3303472	2.03					
			高強度聚氨酯 High-strength polyurethane	滾珠 Ball bearing	3303502	1.19					
			超級聚氨酯 Super polyurethane	滾珠 Ball bearing	3303562	1.19					
耐高溫 High-heat resistant	滾珠 Ball bearing	3303849	1.28								

3系列—平底型—单边刹制式 3Series—Top plate type— with side brake

轮径 Wheel Dia. (mm)	轮宽 Wheel width (mm)	承载 Load capacity (kg)	单轮材料 Material of Wheel	轴承 Bearing	编号 Code No.	重量 N.W. (kg)	安装高度 Load height (mm)	底板规格 Top plate size (mm)	孔距 Ball hole spacing (mm)	孔径 Ball hole Dia. (mm)	转动半径 Swivel radius (mm)
65	32	65	软橡胶 Rubber	轴套 Bushing	3303324A		95	95X67	73X45	8.5	69
		61	高强度人造胶 High-strength artificial rubber	滚珠 Ball bearing	3303623A						
			尼龙 Nylon	滚珠 Ball bearing	3303408A						
			铸铁 Cast-iron	轴套 Bushing	3303468A						
		86	高强度聚氨酯 High-strength polyurethane	滚珠 Ball bearing	3303605A						
			超级聚氨酯 Super polyurethane	滚珠 Ball bearing	3303558A						
	耐高温 High-heat resistant	滚珠 Ball bearing	3303852								
75	32	90	软橡胶 Rubber	轴套 Bushing	3303325A	0.85	107	95X67	73X45	8.5	74
		80	高强度人造胶 High-strength artificial rubber	滚珠 Ball bearing	3303523A	0.86					
			尼龙 Nylon	滚珠 Ball bearing	3303409A	0.84					
			铸铁 Cast-iron	轴套 Bushing	3303469A	1.20					
		100	高强度聚氨酯 High-strength polyurethane	滚珠 Ball bearing	3303499A	0.86					
			超级聚氨酯 Super polyurethane	滚珠 Ball bearing	3303559A	0.86					
	耐高温 High-heat resistant	滚珠 Ball bearing	3303853	0.89							
90	32	95	软橡胶 Rubber	轴套 Bushing	3303326A	0.94	120	95X67	73X45	8.5	81
		85	高强度人造胶 High-strength artificial rubber	滚珠 Ball bearing	3303524A	0.92					
			尼龙 Nylon	滚珠 Ball bearing	3303410A	0.89					
			铸铁 Cast-iron	轴套 Bushing	3303470A	1.50					
		110	高强度聚氨酯 High-strength polyurethane	滚珠 Ball bearing	3303500A	0.92					
			超级聚氨酯 Super polyurethane	滚珠 Ball bearing	3303560A	0.92					
	耐高温 High-heat resistant	滚珠 Ball bearing	3303854	0.97							
100	32	100	软橡胶 Rubber	轴套 Bushing	3303327A	1.03	130	95X67	73X45	8.5	86
		90	高强度人造胶 High-strength artificial rubber	滚珠 Ball bearing	3303525A	0.96					
			尼龙 Nylon	滚珠 Ball bearing	3303411A	0.94					
			铸铁 Cast-iron	轴套 Bushing	3303471A	1.55					
		130	高强度聚氨酯 High-strength polyurethane	滚珠 Ball bearing	3303501A	0.96					
			超级聚氨酯 Super polyurethane	滚珠 Ball bearing	3303561A	0.96					
	耐高温 High-heat resistant	滚珠 Ball bearing	3303855	1.04							
125	32	105	软橡胶 Rubber	轴套 Bushing	3303328A	1.30	154	95X67	73X45	8.5	98
		95	高强度人造胶 High-strength artificial rubber	滚珠 Ball bearing	3303526A	1.10					
			尼龙 Nylon	滚珠 Ball bearing	3303412A	1.04					
			铸铁 Cast-iron	轴套 Bushing	3303472A	1.94					
		140	高强度聚氨酯 High-strength polyurethane	滚珠 Ball bearing	3303502A	1.10					
			超级聚氨酯 Super polyurethane	滚珠 Ball bearing	3303562A	1.10					
	耐高温 High-heat resistant	滚珠 Ball bearing	3303856	1.19							



3303561A



3303525A



3303411A



3303471A



3303855

3系列—丝杆型 3Series—Threaded stem type

3303568

3303505

3303529

3303418

3303334

轮径 Wheel Dia. (mm)	轮宽 Wheel width (mm)	承载 Load capacity (kg)	单轮材料 Material of Wheel	轴承 Bearing	编号 Code No.	重量 N.W. (kg)	安装高度 Load height (mm)	丝杆规格 Threaded stem size (mm)	转动半径 Swivel radius (mm)
65	32	65	软橡胶 Rubber	轴套 Bushing	3303331		97	12X25 (12X35)	69
		61	高强度人造胶 High-strength artificial rubber	滚珠 Ball bearing	3303626				
		86	尼龙 Nylon	滚珠 Ball bearing	3303415				
			铸铁 Cast-iron	轴套 Bushing	3303475				
			高强度聚氨酯 High-strength polyurethane	滚珠 Ball bearing	3303608				
			超级聚氨酯 Super polyurethane	滚珠 Ball bearing	3303565				
	耐高温 High-heat resistant	滚珠 Ball bearing	3303859						
75	32	90	软橡胶 Rubber	轴套 Bushing	3303332	0.64	109	12X25 (12X35)	74
		80	高强度人造胶 High-strength artificial rubber	滚珠 Ball bearing	3303527	0.65			
		100	尼龙 Nylon	滚珠 Ball bearing	3303416	0.63			
			铸铁 Cast-iron	轴套 Bushing	3303476	1.00			
			高强度聚氨酯 High-strength polyurethane	滚珠 Ball bearing	3303503	0.65			
			超级聚氨酯 Super polyurethane	滚珠 Ball bearing	3303566	0.65			
	耐高温 High-heat resistant	滚珠 Ball bearing	3303860	0.69					
90	32	95	软橡胶 Rubber	轴套 Bushing	3303333	0.74	122	12X25 (12X35)	81
		85	高强度人造胶 High-strength artificial rubber	滚珠 Ball bearing	3303528	0.71			
		110	尼龙 Nylon	滚珠 Ball bearing	3303417	0.69			
			铸铁 Cast-iron	轴套 Bushing	3303477	1.30			
			高强度聚氨酯 High-strength polyurethane	滚珠 Ball bearing	3303504	0.71			
			超级聚氨酯 Super polyurethane	滚珠 Ball bearing	3303567	0.71			
	耐高温 High-heat resistant	滚珠 Ball bearing	3303861	0.77					
100	32	100	软橡胶 Rubber	轴套 Bushing	3303334	0.82	132	12X25 (12X35)	86
		90	高强度人造胶 High-strength artificial rubber	滚珠 Ball bearing	3303529	0.74			
		130	尼龙 Nylon	滚珠 Ball bearing	3303418	0.72			
			铸铁 Cast-iron	轴套 Bushing	3303478	1.34			
			高强度聚氨酯 High-strength polyurethane	滚珠 Ball bearing	3303505	0.74			
			超级聚氨酯 Super polyurethane	滚珠 Ball bearing	3303568	0.74			
	耐高温 High-heat resistant	滚珠 Ball bearing	3303862	0.83					
125	32	105	软橡胶 Rubber	轴套 Bushing	3303335	1.07	156	12X25 (12X35)	98
		95	高强度人造胶 High-strength artificial rubber	滚珠 Ball bearing	3303530	0.88			
		140	尼龙 Nylon	滚珠 Ball bearing	3303419	0.83			
			铸铁 Cast-iron	轴套 Bushing	3303479	1.68			
			高强度聚氨酯 High-strength polyurethane	滚珠 Ball bearing	3303506	0.88			
			超级聚氨酯 Super polyurethane	滚珠 Ball bearing	3303569	0.88			
	耐高温 High-heat resistant	滚珠 Ball bearing	3303863	0.98					

3系列—丝杆型—双刹制式 3Series—Threaded stem type— with dual brake

轮径 Wheel Dia. (mm)	轮宽 Wheel width (mm)	承载 Load capacity (kg)	单轮材料 Material of Wheel	轴承 Bearing	编号 Code No.	重量 N.W. (kg)	安装高度 Load height (mm)	丝杆规格 Threaded stem size (mm)	转动半径 Swivel radius (mm)
65	32	65	软橡胶 Rubber	轴套 Bushing	3303338		97	12X25 (12X35)	69
		61	高强度人造胶 High-strength artificial rubber	滚珠 Ball bearing	3303629				
		86	尼龙 Nylon	滚珠 Ball bearing	3303422				
			铸铁 Cast-iron	轴套 Bushing	3303482				
			高强度聚氨酯 High-strength polyurethane	滚珠 Ball bearing	3303611				
			超级聚氨酯 Super polyurethane	滚珠 Ball bearing	3303572				
耐高温 High-heat resistant	滚珠 Ball bearing	3303866							
75	32	90	软橡胶 Rubber	轴套 Bushing	3303339	0.80	109	12X25 (12X35)	74
		80	高强度人造胶 High-strength artificial rubber	滚珠 Ball bearing	3303531	0.80			
		尼龙 Nylon	滚珠 Ball bearing	3303423	0.79				
		铸铁 Cast-iron	轴套 Bushing	3303483	1.14				
		100	高强度聚氨酯 High-strength polyurethane	滚珠 Ball bearing	3303507	0.80			
			超级聚氨酯 Super polyurethane	滚珠 Ball bearing	3303573	0.80			
耐高温 High-heat resistant	滚珠 Ball bearing		3303867	0.84					
90	32	95	软橡胶 Rubber	轴套 Bushing	3303340	0.90	122	12X25 (12X35)	81
		85	高强度人造胶 High-strength artificial rubber	滚珠 Ball bearing	3303532	0.87			
		尼龙 Nylon	滚珠 Ball bearing	3303424	0.84				
		铸铁 Cast-iron	轴套 Bushing	3303484	1.44				
		110	高强度聚氨酯 High-strength polyurethane	滚珠 Ball bearing	3303508	0.87			
			超级聚氨酯 Super polyurethane	滚珠 Ball bearing	3303574	0.87			
耐高温 High-heat resistant	滚珠 Ball bearing		3303868	0.93					
100	32	100	软橡胶 Rubber	轴套 Bushing	3303341	0.98	132	12X25 (12X35)	86
		90	高强度人造胶 High-strength artificial rubber	滚珠 Ball bearing	3303533	0.91			
		尼龙 Nylon	滚珠 Ball bearing	3303425	0.88				
		铸铁 Cast-iron	轴套 Bushing	3303485	1.52				
		130	高强度聚氨酯 High-strength polyurethane	滚珠 Ball bearing	3303509	0.91			
			超级聚氨酯 Super polyurethane	滚珠 Ball bearing	3303575	0.91			
耐高温 High-heat resistant	滚珠 Ball bearing		3303869	0.99					
125	32	105	软橡胶 Rubber	轴套 Bushing	3303342	1.24	156	12X25 (12X35)	98
		95	高强度人造胶 High-strength artificial rubber	滚珠 Ball bearing	3303534	1.04			
		尼龙 Nylon	滚珠 Ball bearing	3303426	0.98				
		铸铁 Cast-iron	轴套 Bushing	3303486	1.88				
		140	高强度聚氨酯 High-strength polyurethane	滚珠 Ball bearing	3303510	1.04			
			超级聚氨酯 Super polyurethane	滚珠 Ball bearing	3303576	1.04			
耐高温 High-heat resistant	滚珠 Ball bearing		3303870	1.14					


3303575

3303509

3303533

3303425

3303341

3系列—丝杆型—单边刹制式 3Series—Threaded stem type—with side brake

3303575A

3303533A

3303425A

3303485A

3303876

轮径 Wheel Dia. (mm)	轮宽 Wheel width (mm)	承载 Load capacity (kg)	单轮材料 Material of Wheel	轴承 Bearing	编号 Code No.	重量 N.W. (kg)	安装高度 Load height (mm)	丝杆规格 Threaded size size (mm)	转动半径 Swivel radius (mm)
65	32	65	软橡胶 Rubber	轴套 Bushing	3303338A		97	12X25 (12X35)	69
		61	高强度人造胶 High-strength artificial rubber	滚珠 Ball bearing	3303629A				
			尼龙 Nylon	滚珠 Ball bearing	3303422A				
			铸铁 Cast-iron	轴套 Bushing	3303482A				
		86	高强度聚氨酯 High-strength polyurethane	滚珠 Ball bearing	3303611A				
			超级聚氨酯 Super polyurethane	滚珠 Ball bearing	3303572A				
	耐高温 High-heat resistant	滚珠 Ball bearing	3303873						
75	32	90	软橡胶 Rubber	轴套 Bushing	3303339A	0.71	109	12X25 (12X35)	74
		80	高强度人造胶 High-strength artificial rubber	滚珠 Ball bearing	3303531A	0.70			
			尼龙 Nylon	滚珠 Ball bearing	3303423A	0.70			
			铸铁 Cast-iron	轴套 Bushing	3303483A	1.06			
		100	高强度聚氨酯 High-strength polyurethane	滚珠 Ball bearing	3303507A	0.70			
			超级聚氨酯 Super polyurethane	滚珠 Ball bearing	3303573A	0.70			
	耐高温 High-heat resistant	滚珠 Ball bearing	3303874	0.76					
90	32	95	软橡胶 Rubber	轴套 Bushing	3303340A	0.81	122	12X25 (12X35)	81
		85	高强度人造胶 High-strength artificial rubber	滚珠 Ball bearing	3303532A	0.79			
			尼龙 Nylon	滚珠 Ball bearing	3303424A	0.75			
			铸铁 Cast-iron	轴套 Bushing	3303484A	1.35			
		110	高强度聚氨酯 High-strength polyurethane	滚珠 Ball bearing	3303508A	0.79			
			超级聚氨酯 Super polyurethane	滚珠 Ball bearing	3303574A	0.79			
	耐高温 High-heat resistant	滚珠 Ball bearing	3303875	0.84					
100	32	100	软橡胶 Rubber	轴套 Bushing	3303341A	0.89	132	12X25 (12X35)	86
		90	高强度人造胶 High-strength artificial rubber	滚珠 Ball bearing	3303533A	0.82			
			尼龙 Nylon	滚珠 Ball bearing	3303425A	0.80			
			铸铁 Cast-iron	轴套 Bushing	3303485A	1.44			
		130	高强度聚氨酯 High-strength polyurethane	滚珠 Ball bearing	3303509A	0.82			
			超级聚氨酯 Super polyurethane	滚珠 Ball bearing	3303575A	0.82			
	耐高温 High-heat resistant	滚珠 Ball bearing	3303876	0.91					
125	32	105	软橡胶 Rubber	轴套 Bushing	3303342A	1.18	156	12X25 (12X35)	98
		95	高强度人造胶 High-strength artificial rubber	滚珠 Ball bearing	3303534A	0.96			
			尼龙 Nylon	滚珠 Ball bearing	3303426A	0.90			
			铸铁 Cast-iron	轴套 Bushing	3303486A	1.85			
		140	高强度聚氨酯 High-strength polyurethane	滚珠 Ball bearing	3303510A	0.96			
			超级聚氨酯 Super polyurethane	滚珠 Ball bearing	3303576A	0.96			
	耐高温 High-heat resistant	滚珠 Ball bearing	3303877	1.06					

3系列-高級設備輪-平底型-活動式 3Series-High-class instrument caster-Top plate type-Swivel

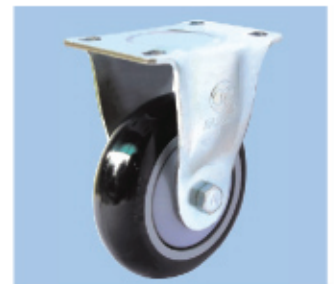
輪徑 Wheel Dia. (mm)	輪寬 Wheel width (mm)	承載 Load capacity (kg)	單輪材料 Material of Wheel	軸承 Bearing	編號 Code No.	重量 N.W. (kg)	安裝高度 Load height (mm)	底板規格 Top plate size (mm)	孔距 Bolt hole spacing (mm)	孔径 Bolt hole Dia. (mm)	轉動半徑 Swivel radius (mm)
75	32	80	超靜聚脲脂 Super-muting polyurethane	滾珠 Ball bearing	3303887	0.74	107	95X67	73X45	8.5	74
		80	高強度人造膠 High-strength artificial rubber	滾珠 Ball bearing	3303943						
		100	超級聚脲脂 Super polyurethane	滾珠 Ball bearing	3303999						
90	32	85	超靜聚脲脂 Super-muting polyurethane	滾珠 Ball bearing	3303890	0.80	120	95X67	73X45	8.5	81
		85	高強度人造膠 High-strength artificial rubber	滾珠 Ball bearing	3303946						
		110	超級聚脲脂 Super polyurethane	滾珠 Ball bearing	3304002						
100	32	90	超靜聚脲脂 Super-muting polyurethane	滾珠 Ball bearing	3303893	0.85	130	95X67	73X45	8.5	86
		90	高強度人造膠 High-strength artificial rubber	滾珠 Ball bearing	3303949						
		130	超級聚脲脂 Super polyurethane	滾珠 Ball bearing	3304005						
125	32	95	超靜聚脲脂 Super-muting polyurethane	滾珠 Ball bearing	3303896	0.96	154	95X67	73X45	8.5	98
		95	高強度人造膠 High-strength artificial rubber	滾珠 Ball bearing	3303952						
		140	超級聚脲脂 Super polyurethane	滾珠 Ball bearing	3304008						


3303893

• 可配不銹鋼支架

3系列-高級設備輪-平底型-固定式 3Series-High-class instrument caster-Top plate type-Rigid

輪徑 Wheel Dia. (mm)	輪寬 Wheel width (mm)	承載 Load capacity (kg)	單輪材料 Material of Wheel	軸承 Bearing	編號 Code No.	重量 N.W. (kg)	安裝高度 Load height (mm)	底板規格 Top plate size (mm)	孔距 Bolt hole spacing (mm)	孔径 Bolt hole Dia. (mm)
75	32	80	超靜聚脲脂 Super-muting polyurethane	滾珠 Ball bearing	3303888	0.50	107	95X67	73X45	8.5
		80	高強度人造膠 High-strength artificial rubber	滾珠 Ball bearing	3303944					
		100	超級聚脲脂 Super polyurethane	滾珠 Ball bearing	3304000					
90	32	85	超靜聚脲脂 Super-muting polyurethane	滾珠 Ball bearing	3303891	0.57	120	95X67	73X45	8.5
		85	高強度人造膠 High-strength artificial rubber	滾珠 Ball bearing	3303947					
		110	超級聚脲脂 Super polyurethane	滾珠 Ball bearing	3304003					
100	32	90	超靜聚脲脂 Super-muting polyurethane	滾珠 Ball bearing	3303894	0.59	130	95X67	73X45	8.5
		90	高強度人造膠 High-strength artificial rubber	滾珠 Ball bearing	3303950					
		130	超級聚脲脂 Super polyurethane	滾珠 Ball bearing	3304006					
125	32	95	超靜聚脲脂 Super-muting polyurethane	滾珠 Ball bearing	3303897	0.72	154	95X67	73X45	8.5
		95	高強度人造膠 High-strength artificial rubber	滾珠 Ball bearing	3303953					
		140	超級聚脲脂 Super polyurethane	滾珠 Ball bearing	3304009					


3303894

• 可配不銹鋼支架

3系列-高級設備輪-平底型-雙剎式 3Series-High-class instrument caster-Top plate type-with dual brake

輪徑 Wheel Dia. (mm)	輪寬 Wheel width (mm)	承載 Load capacity (kg)	單輪材料 Material of Wheel	軸承 Bearing	編號 Code No.	重量 N.W. (kg)	安裝高度 Load height (mm)	底板規格 Top plate size (mm)	孔距 Bolt hole spacing (mm)	孔径 Bolt hole Dia. (mm)	轉動半徑 Swivel radius (mm)
75	32	80	超靜聚脲脂 Super-muting polyurethane	滾珠 Ball bearing	3303902	0.90	107	95X67	73X45	8.5	74
		80	高強度人造膠 High-strength artificial rubber	滾珠 Ball bearing	3303958						
		100	超級聚脲脂 Super polyurethane	滾珠 Ball bearing	3304014						
90	32	85	超靜聚脲脂 Super-muting polyurethane	滾珠 Ball bearing	3303903	0.96	120	95X67	73X45	8.5	81
		85	高強度人造膠 High-strength artificial rubber	滾珠 Ball bearing	3303959						
		110	超級聚脲脂 Super polyurethane	滾珠 Ball bearing	3304015						
100	32	90	超靜聚脲脂 Super-muting polyurethane	滾珠 Ball bearing	3303904	1.00	130	95X67	73X45	8.5	86
		90	高強度人造膠 High-strength artificial rubber	滾珠 Ball bearing	3303960						
		130	超級聚脲脂 Super polyurethane	滾珠 Ball bearing	3304016						
125	32	95	超靜聚脲脂 Super-muting polyurethane	滾珠 Ball bearing	3303905	1.13	154	95X67	73X45	8.5	98
		95	高強度人造膠 High-strength artificial rubber	滾珠 Ball bearing	3303961						
		140	超級聚脲脂 Super polyurethane	滾珠 Ball bearing	3304017						


3304072

3系列-高級設備輪-平底型-單邊剎制式 3Series-High-class instrument caster-Top plate type-with side brake

3303911

3303918

3303918 (空心釘)

3303981

3303981 (空心釘)

輪徑 Wheel Dia. (mm)	輪寬 Wheel width (mm)	承載 Load capacity (kg)	單輪材料 Material of Wheel	軸承 Bearing	編號 Code No.	重量 N.W. (kg)	安裝高度 Load height (mm)	底板規格 Top plate size (mm)	孔距 Bolt hole spacing (mm)	孔徑 Bolt hole Dia. (mm)	轉動半徑 Swivel radius (mm)
75	32	80	超靜聚脲脂 Super-muting polyurethane	滾珠 Ball bearing	3303909	0.81	107	95X67	73X45	8.5	74
		80	超靜人造膠 Super-muting synthetic adhesive	滾珠 Ball bearing	3303965						
		100	超級聚脲脂 Super polyurethane	滾珠 Ball bearing	3304021						
90	32	85	超靜聚脲脂 Super-muting polyurethane	滾珠 Ball bearing	3303910	0.87	120	95X67	73X45	8.5	81
		85	超靜人造膠 Super-muting synthetic adhesive	滾珠 Ball bearing	3303966						
		110	超級聚脲脂 Super polyurethane	滾珠 Ball bearing	3304022						
100	32	90	超靜聚脲脂 Super-muting polyurethane	滾珠 Ball bearing	3303911	0.92	130	95X67	73X45	8.5	86
		90	超靜人造膠 Super-muting synthetic adhesive	滾珠 Ball bearing	3303967						
		130	超級聚脲脂 Super polyurethane	滾珠 Ball bearing	3304023						
125	32	95	超靜聚脲脂 Super-muting polyurethane	滾珠 Ball bearing	3303912	1.05	154	95X67	73X45	8.5	98
		95	超靜人造膠 Super-muting synthetic adhesive	滾珠 Ball bearing	3303968						
		140	超級聚脲脂 Super polyurethane	滾珠 Ball bearing	3304024						

3系列-高級設備輪-絲杆型 3Series-High-class instrument caster-Threaded stem type

輪徑 Wheel Dia. (mm)	輪寬 Wheel width (mm)	承載 Load capacity (kg)	單輪材料 Material of Wheel	軸承 Bearing	編號 Code No.	重量 N.W. (kg)	安裝高度 Load height (mm)	絲杆規格 Threaded stem size (mm)	轉動半徑 Swivel radius (mm)
75	32	80	超靜聚脲脂 Super-muting polyurethane	滾珠 Ball bearing	3303916	0.59	109	12X25 (12X35)	74
		80	超靜人造膠 Super-muting synthetic adhesive	滾珠 Ball bearing	3303972				
		100	超級聚脲脂 Super polyurethane	滾珠 Ball bearing	3304028				
90	32	85	超靜聚脲脂 Super-muting polyurethane	滾珠 Ball bearing	3303917	0.66	122	12X25 (12X35)	81
		85	超靜人造膠 Super-muting synthetic adhesive	滾珠 Ball bearing	3303973				
		110	超級聚脲脂 Super polyurethane	滾珠 Ball bearing	3304029				
100	32	90	超靜聚脲脂 Super-muting polyurethane	滾珠 Ball bearing	3303918	0.71	132	12X25 (12X35)	86
		90	超靜人造膠 Super-muting synthetic adhesive	滾珠 Ball bearing	3303974				
		130	超級聚脲脂 Super polyurethane	滾珠 Ball bearing	3304030				
125	32	95	超靜聚脲脂 Super-muting polyurethane	滾珠 Ball bearing	3303919	0.83	156	12X25 (12X35)	98
		95	超靜人造膠 Super-muting synthetic adhesive	滾珠 Ball bearing	3303975				
		140	超級聚脲脂 Super polyurethane	滾珠 Ball bearing	3304031				

3系列-高級設備輪-絲杆型-雙剎制式 3Series-High-class instrument caster-Threaded stem type-with dual brake

輪徑 Wheel Dia. (mm)	輪寬 Wheel width (mm)	承載 Load capacity (kg)	單輪材料 Material of Wheel	軸承 Bearing	編號 Code No.	重量 N.W. (kg)	安裝高度 Load height (mm)	絲杆規格 Threaded stem size (mm)	轉動半徑 Swivel radius (mm)
75	32	80	超靜聚脲脂 Super-muting polyurethane	滾珠 Ball bearing	3303923	0.76	109	12X25 (12X35)	74
		80	超靜人造膠 Super-muting synthetic adhesive	滾珠 Ball bearing	3303979				
		100	超級聚脲脂 Super polyurethane	滾珠 Ball bearing	3304035				
90	32	85	超靜聚脲脂 Super-muting polyurethane	滾珠 Ball bearing	3303924	0.82	122	12X25 (12X35)	81
		85	超靜人造膠 Super-muting synthetic adhesive	滾珠 Ball bearing	3303980				
		110	超級聚脲脂 Super polyurethane	滾珠 Ball bearing	3304036				
100	32	90	超靜聚脲脂 Super-muting polyurethane	滾珠 Ball bearing	3303925	0.86	132	12X25 (12X35)	86
		90	超靜人造膠 Super-muting synthetic adhesive	滾珠 Ball bearing	3303981				
		130	超級聚脲脂 Super polyurethane	滾珠 Ball bearing	3304037				
125	32	95	超靜聚脲脂 Super-muting polyurethane	滾珠 Ball bearing	3303926	0.98	156	12X25 (12X35)	98
		95	超靜人造膠 Super-muting synthetic adhesive	滾珠 Ball bearing	3303982				
		140	超級聚脲脂 Super polyurethane	滾珠 Ball bearing	3304038				

3系列—高级设备轮—丝杆型—单边刹制式
3Series—High-class instrument caster—Threaded stem type—with side brake

轮径 Wheel Dia. (mm)	轮宽 Wheel width (mm)	承载 Load capacity (kg)	单轮材料 Material of Wheel	轴承 Bearing	编号 Code No.	重量 N.W. (kg)	安装高度 Load height (mm)	丝杆规格 Threaded stem size (mm)	转动半径 Swivel radius (mm)
75	32	80	超静聚氨酯 Super-muting polyurethane	滚珠 Ball bearing	3303930	0.67	109	12X25 (12X35)	74
		80	超静人造胶 Super-muting synthetic adhesive	滚珠 Ball bearing	3303986				
		100	超级聚氨酯 Super polyurethane	滚珠 Ball bearing	3304042				
90	32	85	超静聚氨酯 Super-muting polyurethane	滚珠 Ball bearing	3303931	0.75	122	12X25 (12X35)	81
		85	超静人造胶 Super-muting synthetic adhesive	滚珠 Ball bearing	3303987				
		110	超级聚氨酯 Super polyurethane	滚珠 Ball bearing	3304043				
100	32	90	超静聚氨酯 Super-muting polyurethane	滚珠 Ball bearing	3303932	0.78	132	12X25 (12X35)	86
		90	超静人造胶 Super-muting synthetic adhesive	滚珠 Ball bearing	3303988				
		130	超级聚氨酯 Super polyurethane	滚珠 Ball bearing	3304044				
125	32	95	超静聚氨酯 Super-muting polyurethane	滚珠 Ball bearing	3303933	0.91	156	12X25 (12X35)	97
		95	超静人造胶 Super-muting synthetic adhesive	滚珠 Ball bearing	3303989				
		140	超级聚氨酯 Super polyurethane	滚珠 Ball bearing	3304045				



3303932



3303932 (空心钉)

3系列—购物车轮—丝杆型 3Series—Trolley caster—Threaded stem type

轮径 Wheel Dia. (mm)	轮宽 Wheel width (mm)	承载 Load capacity (kg)	单轮材料 Material of Wheel	轴承 Bearing	编号 Code No.	重量 N.W. (kg)	安装高度 Load height (mm)	丝杆规格 Threaded stem size (mm)	转动半径 Swivel radius (mm)
75	25	70	超静聚氨酯 Super-muting polyurethane	滚珠 Ball bearing	3303703	0.44	104	12X25 (12X35)	70
		70	超静人造胶 Super-muting synthetic adhesive	滚珠 Ball bearing	3303745				
		75	超级聚氨酯 Super polyurethane	滚珠 Ball bearing	3303787				
100	25	80	超静聚氨酯 Super-muting polyurethane	滚珠 Ball bearing	3303705	0.51	129	12X25 (12X35)	82
		80	超静人造胶 Super-muting synthetic adhesive	滚珠 Ball bearing	3303747				
		85	超级聚氨酯 Super polyurethane	滚珠 Ball bearing	3303789				
125	25	82	超静聚氨酯 Super-muting polyurethane	滚珠 Ball bearing	3303706	0.62	154	12X25 (12X35)	93
		82	超静人造胶 Super-muting synthetic adhesive	滚珠 Ball bearing	3303748				
		87	超级聚氨酯 Super polyurethane	滚珠 Ball bearing	3303790				



3303705



3303705 (空心钉)

3系列—购物车电梯轮 3Series—Shopping cart caster

轮径 Wheel Dia. (mm)	轮宽 Wheel width (mm)	承载 Load capacity (kg)	单轮材料 Material of Wheel	轴承 Bearing	编号 Code No.	重量 N.W. (kg)	安装高度 Load height (mm)	轴承孔径 Bearing bore dia. (mm)	转动半径 Swivel radius (mm)
100	30	50	高强度聚氨酯 High-strength polyurethane	滚珠 Ball bearing	3303820		128	12	94
125	30	70	高强度聚氨酯 High-strength polyurethane	滚珠 Ball bearing	3303821	0.78	150	12	114



3303821


3304072

3304079
3系列—高级设备轮—平底型—活动式/固定式（圆边） 3Series--High-class instrument- Top plate type-Swivel/Rigid(Round surface)

轮径 Wheel Dia. (mm)	轮宽 Wheel width (mm)	承载 Load capacity (kg)	单轮材料 Material of Wheel	轴承 Bearing	编 号 Code No.		活动重量 swivel N.W. (Kg)	固定重量 rigid N.W. (Kg)	安装高度 Load height (mm)	底板规格 Top plate size (mm)	孔距 Bolt hole spacing (mm)	孔径 Bolt hole Dia. (mm)	转动半径 Swivel radius (mm)
					活动 Swivel	固定 Rigid							
75	32	100	超静聚氨酯（圆边） Super casting polyurethane(Round surface)	滚珠 Ball bearing	3304055	3304056	0.74	0.51	107	95X67	73X45	8.5	74
90	32	110	超静聚氨酯（圆边） Super casting polyurethane(Round surface)	滚珠 Ball bearing	3304058	3304059	0.81	0.58	120	95X67	73X45	8.5	81
100	32	130	超静聚氨酯（圆边） Super casting polyurethane(Round surface)	滚珠 Ball bearing	3304061	3304062	0.85	0.61	130	95X67	73X45	8.5	86
125	32	140	超静聚氨酯（圆边） Super casting polyurethane(Round surface)	滚珠 Ball bearing	3304064	3304065	0.96	0.73	154	95X67	73X45	8.5	98


3304093

3304100
3系列—高级设备轮—丝杆型（圆边） 3Series-High-class instrument-Threaded stem type(Round surface)

轮径 Wheel Dia. (mm)	轮宽 Wheel width (mm)	承载 Load capacity (kg)	单轮材料 Material of Wheel	轴承 Bearing	编 号 Code No.	重 量 N.W. (kg)	安装高度 Load height (mm)	丝杆规格 Threaded stem size (mm)	转动半径 Swivel radius (mm)
75	32	100	超静聚氨酯（圆边） Super casting polyurethane(Round surface)	滚珠 Ball bearing	3304084	0.59	109	12X25 (12X35)	74
90	32	110	超静聚氨酯（圆边） Super casting polyurethane(Round surface)	滚珠 Ball bearing	3304085	0.66	122	12X25 (12X35)	81
100	32	130	超静聚氨酯（圆边） Super casting polyurethane(Round surface)	滚珠 Ball bearing	3304086	0.71	132	12X25 (12X35)	86
125	32	140	超静聚氨酯（圆边） Super casting polyurethane(Round surface)	滚珠 Ball bearing	3304087	0.83	156	12X25 (12X35)	98

● 专利产品（专利号：PAT 02303957.4）

● 产品特点：转动灵活、行走宁静，承载大、保护地板，耐磨、耐冲击，防水、防化学品腐蚀。

● Patent (Patent No: PAT 02303957.4)

● **Product Features : Convenient operation, Be quiet of impact, High loads, Wear-resistant, Floor-protected, Impact Resistant, Waterproof, Chemical Corrosion Resistant**


3304343

3304344

3304354

3304361
3系列—高级设备轮—平底型—活动式/固定式(平底) 3Series--High-class instrument- Top plate type-Swivel/Rigid(Flat surface)

轮径 Wheel Dia. (mm)	轮宽 Wheel width (mm)	承载 Load capacity (kg)	单轮材料 Material of Wheel	轴承 Bearing	编 号 Code No.		活动重量 swivel N.W. (Kg)	固定重量 rigid N.W. (Kg)	安装高度 Load height (mm)	底板规格 Top plate size (mm)	孔距 Bolt hole spacing (mm)	孔径 Bolt hole Dia. (mm)	转动半径 Swivel radius (mm)
					活动 Swivel	固定 Rigid							
75	32	100	超静聚氨酯(平底) Super mating polyurethane(Flat surface)	滚珠 Ball bearing	3304169	3304170	0.75	0.51	107	95X67	73X45	8.5	74
90	32	110	超静聚氨酯(平底) Super mating polyurethane(Flat surface)	滚珠 Ball bearing	3304172	3304173	0.81	0.58	120	95X67	73X45	8.5	81
100	32	130	超静聚氨酯(平底) Super mating polyurethane(Flat surface)	滚珠 Ball bearing	3304175	3304176	0.86	0.61	130	95X67	73X45	8.5	86
125	32	140	超静聚氨酯(平底) Super mating polyurethane(Flat surface)	滚珠 Ball bearing	3304178	3304179	0.97	0.73	154	95X67	73X45	8.5	98


3304368

3304375

3304382
3系列—高级设备轮—丝杆型(平底) 3Series-High-class instrument-Threaded stem type(Flat surface)

轮径 Wheel Dia. (mm)	轮宽 Wheel width (mm)	承载 Load capacity (kg)	单轮材料 Material of Wheel	轴承 Bearing	编 号 Code No.	重 量 N.W. (kg)	安装高度 Load height (mm)	丝杆规格 Threaded stem size (mm)	转动半径 Swivel radius (mm)
75	32	100	超静聚氨酯(平底) Super mating polyurethane(Flat surface)	滚珠 Ball bearing	3304198	0.61	109	12X25 (12X35)	74
90	32	110	超静聚氨酯(平底) Super mating polyurethane(Flat surface)	滚珠 Ball bearing	3304199	0.67	122	12X25 (12X35)	81
100	32	130	超静聚氨酯(平底) Super mating polyurethane(Flat surface)	滚珠 Ball bearing	3304200	0.72	132	12X25 (12X35)	86
125	32	140	超静聚氨酯(平底) Super mating polyurethane(Flat surface)	滚珠 Ball bearing	3304201	0.84	156	12X25 (12X35)	98

- 专利产品 (专利号: PAT 03322925.2)
- 产品特点: 转动灵活、行走宁静, 承载大、保护地板, 耐磨、耐冲击, 防水、防化学品腐蚀。

- Patent (Patent No: PAT 03322925.2)
- Product Features : Convenient operation, Be quiet of impact, High loads, Wear-resistant, Floor-protected, Impact Resistant, Waterproof, Chemical Corrosion Resistant

4系列—平底型—耐力活动轮 4Series -Top plate type-Endurant Swivel castor


4404613

轮径 Wheel Dia. (mm)	轮宽 Wheel width (mm)	承载 Load capacity (kg)	单轮材料 Material of Wheel	轴承 Bearing	编号 Code No.	重量 N.W. (kg)	安装高度 Load height (mm)	底板规格 Top plate size (mm)	孔距 Bolt hole spacing (mm)	孔径 Bolt hole Dia. (mm)	转动半径 Swivel radius (mm)
100	50	280	耐力尼龙 Endurant nylon	滚珠 Ball bearing	4404607	1.96	145	114X100	84X71	11	82
125	50	350	耐力尼龙 Endurant nylon	滚珠 Ball bearing	4404610	2.16	168	114X100	84X71	11	99
150	50	410	耐力尼龙 Endurant nylon	滚珠 Ball bearing	4404613	2.41	193	114X100	84X71	11	114
200	50	420	耐力尼龙 Endurant nylon	滚珠 Ball bearing	4404616	2.94	243	114X100	84X71	11	149

4系列—平底型—耐力固定轮 4Series -Top plate type-Endurant Rigid castor


4404614

轮径 Wheel Dia. (mm)	轮宽 Wheel width (mm)	承载 Load capacity (kg)	单轮材料 Material of Wheel	轴承 Bearing	编号 Code No.	重量 N.W. (kg)	安装高度 Load height (mm)	底板规格 Top plate size (mm)	孔距 Bolt hole spacing (mm)	孔径 Bolt hole Dia. (mm)
100	50	280	耐力尼龙 Endurant nylon	滚珠 Ball bearing	4404608	1.53	145	114X100	84X71	11
125	50	350	耐力尼龙 Endurant nylon	滚珠 Ball bearing	4404611	1.72	168	114X100	84X71	11
150	50	410	耐力尼龙 Endurant nylon	滚珠 Ball bearing	4404614	1.96	193	114X100	84X71	11
200	50	420	耐力尼龙 Endurant nylon	滚珠 Ball bearing	4404617	2.48	243	114X100	84X71	11

4系列—平底型—耐力双刹轮 4Series-Top plate type-Endurant Dual brake castor


4404621A

轮径 Wheel Dia. (mm)	轮宽 Wheel width (mm)	承载 Load capacity (kg)	单轮材料 Material of Wheel	轴承 Bearing	编号 Code No.	重量 N.W. (kg)	安装高度 Load height (mm)	底板规格 Top plate size (mm)	孔距 Bolt hole spacing (mm)	孔径 Bolt hole Dia. (mm)	转动半径 Swivel radius (mm)
100	50	280	耐力尼龙 Endurant nylon	滚珠 Ball bearing	4404619A	2.45	145	114X100	84X71	11	82
125	50	350	耐力尼龙 Endurant nylon	滚珠 Ball bearing	4404620A	2.67	168	114X100	84X71	11	99
150	50	410	耐力尼龙 Endurant nylon	滚珠 Ball bearing	4404621A	3.10	193	114X100	84X71	11	114
200	50	420	耐力尼龙 Endurant nylon	滚珠 Ball bearing	4404622A	3.65	243	114X100	84X71	11	149

4系列—平底型—耐力边刹轮 4Series-Top plate type-Endurant Side brake castor


4404621

轮径 Wheel Dia. (mm)	轮宽 Wheel width (mm)	承载 Load capacity (kg)	单轮材料 Material of Wheel	轴承 Bearing	编号 Code No.	重量 N.W. (kg)	安装高度 Load height (mm)	底板规格 Top plate size (mm)	孔距 Bolt hole spacing (mm)	孔径 Bolt hole Dia. (mm)	转动半径 Swivel radius (mm)
100	50	280	耐力尼龙 Endurant nylon	滚珠 Ball bearing	4404619	2.21	145	114X100	84X71	11	82
125	50	350	耐力尼龙 Endurant nylon	滚珠 Ball bearing	4404620	2.39	168	114X100	84X71	11	99
150	50	410	耐力尼龙 Endurant nylon	滚珠 Ball bearing	4404621	2.65	193	114X100	84X71	11	114
200	50	420	耐力尼龙 Endurant nylon	滚珠 Ball bearing	4404622	3.23	243	114X100	84X71	11	149

- 专利产品 (专利号: PAT 200430044165.6)
- 产品特点: 转动灵活、承载大, 耐磨、耐冲击, 防水、防化学品腐蚀。

- Patent (Patent No: PAT 200430044165.6)
- Product Features: Convenient operation, High Loads, Wear-resistant, Impact Resistant, Waterproof, Chemical Corrosion Resistant.

4系列—平底型—活动式 4Series-Top plate type-Swivel

轮径 Wheel Dia. (mm)	轮宽 Wheel width (mm)	承载 Load capacity (kg)	单轮材料 Material of Wheel	轴承 Bearing	编号 Code No.	重量 N.W. (kg)	安装高度 Load height (mm)	底板规格 Top plate size (mm)	孔距 Bolt hole spacing (mm)	孔径 Bolt hole Dia. (mm)	转动半径 Swivel radius (mm)
100	45	280	A型尼龙 A-Nylon	滚珠 Ball bearing	4404417	1.73	139	114X100	84X71	11	78
		290	铸铁 Cast-iron	滚柱 Roller bearing	4404465	3.03					
	50	160	高强度人造胶 High-strength artificial rubber	滚柱 Roller bearing	4404500	2.03					
				滚珠 Ball bearing	4404655	2.05					
		280	超级聚氨酯(红色) Super polyurethane(Magenta)	滚柱 Roller bearing	4404540	2.03					
				滚珠 Ball bearing	4404671	2.05					
		290	V型槽铸铁 V-Groove cast-iron	滚柱 Roller bearing	4404556	3.48					
		280	铁芯聚氨酯 Iron centre polyurethane	滚柱 Roller bearing	4404623	2.66					
		250	高强度聚氨酯烽火 High-strength polyurethane flame	滚珠 Ball bearing	4404735	2.01					
		280	超级聚氨酯(黑色) Super polyurethane(black)	滚柱 Roller bearing	4404751	2.03					
		滚珠 Ball bearing	4404767	2.05							
	370	耐高温 High-heat resistant	滚珠 Ball bearing	4404783	2.15						
125	45	350	A型尼龙 A-Nylon	滚珠 Ball bearing	4404420	1.90	160	114X100	84X71	11	89
		360	铸铁 Cast-iron	滚柱 Roller bearing	4404468	3.73					
	50	175	高强度人造胶 High-strength artificial rubber	滚柱 Roller bearing	4404503	2.27					
				滚珠 Ball bearing	4404658	2.29					
		350	超级聚氨酯(红色) Super polyurethane(Magenta)	滚柱 Roller bearing	4404543	2.27					
				滚珠 Ball bearing	4404674	2.29					
		360	V型槽铸铁 V-Groove cast-iron	滚柱 Roller bearing	4404559	3.75					
		350	铁芯聚氨酯 Iron centre polyurethane	滚柱 Roller bearing	4404626	3.21					
		280	高强度聚氨酯烽火 High-strength polyurethane flame	滚珠 Ball bearing	4404738	2.25					
		350	超级聚氨酯(黑色) Super polyurethane(black)	滚柱 Roller bearing	4404754	2.27					
		滚珠 Ball bearing	4404770	2.29							
	460	耐高温 High-heat resistant	滚珠 Ball bearing	4404786	2.43						
150	45	410	A型尼龙 A-Nylon	滚珠 Ball bearing	4404423	2.10	186	114X100	84X71	11	113
		420	铸铁 Cast-iron	滚柱 Roller bearing	4404471	4.07					
	50	285	高强度人造胶 High-strength artificial rubber	滚柱 Roller bearing	4404506	2.49					
				滚珠 Ball bearing	4404661	2.54					
		410	超级聚氨酯(红色) Super polyurethane(Magenta)	滚柱 Roller bearing	4404546	2.49					
				滚珠 Ball bearing	4404677	2.54					
		420	V型槽铸铁 V-Groove cast-iron	滚柱 Roller bearing	4404481	4.93					
		410	铁芯聚氨酯 Iron centre polyurethane	滚柱 Roller bearing	4404629	3.57					
		320	高强度聚氨酯烽火 High-strength polyurethane flame	滚珠 Ball bearing	4404741	2.49					
		410	超级聚氨酯(黑色) Super polyurethane(black)	滚柱 Roller bearing	4404757	2.49					
		滚珠 Ball bearing	4404773	2.54							
	480	耐高温 High-heat resistant	滚珠 Ball bearing	4404789	2.75						
200	45	420	A型尼龙 A-Nylon	滚珠 Ball bearing	4404426	2.42	233	114X100	84X71	11	140
		430	铸铁 Cast-iron	滚柱 Roller bearing	4404474	5.55					
	50	310	高强度人造胶 High-strength artificial rubber	滚柱 Roller bearing	4404509	3.03					
				滚珠 Ball bearing	4404664	3.19					
		420	超级聚氨酯(红色) Super polyurethane(Magenta)	滚柱 Roller bearing	4404549	3.03					
				滚珠 Ball bearing	4404680	3.19					
		430	V型槽铸铁 V-Groove cast-iron	滚柱 Roller bearing	4404562	5.79					
		420	铁芯聚氨酯 Iron centre polyurethane	滚柱 Roller bearing	4404632	4.90					
		350	高强度聚氨酯烽火 High-strength polyurethane flame	滚珠 Ball bearing	4404744	3.11					
		420	超级聚氨酯(黑色) Super polyurethane(black)	滚柱 Roller bearing	4404760	3.03					
		滚珠 Ball bearing	4404776	3.19							
	510	耐高温 High-heat resistant	滚珠 Ball bearing	4404792	3.56						



4404677



4404423



4404741



4404773

4系列—平底型—固定式 4Series—Top plate type—Rigid


4404662



4404630



4404790



4404482

轮径 Wheel Dia. (mm)	轮宽 Wheel width (mm)	承载 Load capacity (kg)	单轮材料 Material of Wheel	轴承 Bearing	编号 Code No.	重量 N.W. (kg)	安装高度 Load height (mm)	底板规格 Top plate size (mm)	孔距 Bolt hole spacing (mm)	孔径 Bolt hole Dia. (mm)
100	45	280	A型尼龙 A-Nylon	滚珠 Ball bearing	4404418	1.38	139	114X100	84X71	11
		290	铸铁 Cast-iron	滚柱 Roller bearing	4404466	2.58				
	50	160	高强度人造胶 High-strength artificial rubber	滚柱 Roller bearing	4404501	1.60				
		280	超级聚氨酯(红色) Super polyurethane(Magenta)	滚珠 Ball bearing	4404656	1.61				
		280	超级聚氨酯(红色) Super polyurethane(Magenta)	滚柱 Roller bearing	4404541	1.60				
		280	铁芯聚氨酯 Iron centre polyurethane	滚珠 Ball bearing	4404672	1.61				
		290	V型槽铸铁 V-Groove cast-iron	滚柱 Roller bearing	4404557	2.98				
		280	铁芯聚氨酯 Iron centre polyurethane	滚柱 Roller bearing	4404624	2.24				
		250	高强度聚氨酯烽火 High-strength polyurethane flame	滚珠 Ball bearing	4404736	1.56				
		280	超级聚氨酯(黑色) Super polyurethane(black)	滚柱 Roller bearing	4404752	1.60				
125	45	350	A型尼龙 A-Nylon	滚珠 Ball bearing	4404421	1.53	160	114X100	84X71	11
		360	铸铁 Cast-iron	滚柱 Roller bearing	4404469	3.29				
	50	175	高强度人造胶 High-strength artificial rubber	滚柱 Roller bearing	4404504	1.82				
		350	超级聚氨酯(红色) Super polyurethane(Magenta)	滚珠 Ball bearing	4404659	1.85				
		350	超级聚氨酯(红色) Super polyurethane(Magenta)	滚柱 Roller bearing	4404544	1.82				
		360	V型槽铸铁 V-Groove cast-iron	滚珠 Ball bearing	4404675	1.85				
		360	V型槽铸铁 V-Groove cast-iron	滚柱 Roller bearing	4404560	3.35				
		350	铁芯聚氨酯 Iron centre polyurethane	滚柱 Roller bearing	4404627	2.77				
		280	高强度聚氨酯烽火 High-strength polyurethane flame	滚珠 Ball bearing	4404739	1.80				
		350	超级聚氨酯(黑色) Super polyurethane(black)	滚柱 Roller bearing	4404755	1.82				
150	45	410	A型尼龙 A-Nylon	滚珠 Ball bearing	4404424	1.73	186	114X100	84X71	11
		420	铸铁 Cast-iron	滚柱 Roller bearing	4404472	3.62				
	50	285	高强度人造胶 High-strength artificial rubber	滚柱 Roller bearing	4404507	2.06				
		285	高强度人造胶 High-strength artificial rubber	滚珠 Ball bearing	4404662	2.08				
		410	超级聚氨酯(红色) Super polyurethane(Magenta)	滚柱 Roller bearing	4404547	2.06				
		410	超级聚氨酯(红色) Super polyurethane(Magenta)	滚珠 Ball bearing	4404678	2.08				
		420	V型槽铸铁 V-Groove cast-iron	滚柱 Roller bearing	4404482	4.39				
		410	铁芯聚氨酯 Iron centre polyurethane	滚柱 Roller bearing	4404630	3.11				
		320	高强度聚氨酯烽火 High-strength polyurethane flame	滚珠 Ball bearing	4404742	2.03				
		410	超级聚氨酯(黑色) Super polyurethane(black)	滚柱 Roller bearing	4404758	2.06				
200	45	420	A型尼龙 A-Nylon	滚珠 Ball bearing	4404427	2.04	233	114X100	84X71	11
		430	铸铁 Cast-iron	滚柱 Roller bearing	4404475	5.12				
	50	310	高强度人造胶 High-strength artificial rubber	滚柱 Roller bearing	4404510	2.60				
		310	高强度人造胶 High-strength artificial rubber	滚珠 Ball bearing	4404665	2.75				
		420	超级聚氨酯(红色) Super polyurethane(Magenta)	滚柱 Roller bearing	4404550	2.60				
		420	超级聚氨酯(红色) Super polyurethane(Magenta)	滚珠 Ball bearing	4404681	2.75				
		430	V型槽铸铁 V-Groove cast-iron	滚柱 Roller bearing	4404563	5.35				
		420	铁芯聚氨酯 Iron centre polyurethane	滚柱 Roller bearing	4404633	4.30				
		350	高强度聚氨酯烽火 High-strength polyurethane flame	滚珠 Ball bearing	4404745	2.63				
		420	超级聚氨酯(黑色) Super polyurethane(black)	滚柱 Roller bearing	4404761	2.60				
510	420	超级聚氨酯(黑色) Super polyurethane(black)	滚珠 Ball bearing	4404777	2.75					
	510	耐高温 High-heat resistant	滚珠 Ball bearing	4404793	3.09					

4系列—平底型—单边刹制式 4Series—Top plate type— with side brake

轮径 Wheel Dia. (mm)	轮宽 Wheel width (mm)	承载 Load capacity (kg)	单轮材料 Material of Wheel	轴承 Bearing	编号 Code No.	重量 N.W. (kg)	安装高度 Load height (mm)	底板规格 Top plate size (mm)	孔距 Bolt hole spacing (mm)	孔径 Bolt hole Dia. (mm)	转动半径 Swivel radius (mm)
100	50	290	铸铁 Cast-iron	滚柱 Roller bearing	4404477	3.26	145	114X100	84X71	11	82
		160	高强度人造胶 High-strength artificial rubber	滚柱 Roller bearing	4404512	2.27					
				滚珠 Ball bearing	4404667	2.28					
		280	超级聚氨酯(红色) Super polyurethane(Magenta)	滚柱 Roller bearing	4404552	2.27					
				滚珠 Ball bearing	4404683	2.28					
		290	V型槽铸铁 V-Groove cast-iron	滚柱 Roller bearing	4404565	3.66					
		280	铁芯聚氨酯 Iron centre polyurethane	滚柱 Roller bearing	4404635	2.90					
		250	高强度聚氨酯烽火 High-strength polyurethane flame	滚珠 Ball bearing	4404747	2.23					
		280	超级聚氨酯(黑色) Super polyurethane(Black)	滚柱 Roller bearing	4404763	2.27					
滚珠 Ball bearing	4404779			2.28							
370	耐高温 High-heat resistant	滚珠 Ball bearing	4404795	2.37							
125	50	360	铸铁 Cast-iron	滚柱 Roller bearing	4404478	4.05	168	114X100	84X71	11	99
		175	高强度人造胶 High-strength artificial rubber	滚柱 Roller bearing	4404513	2.50					
				滚珠 Ball bearing	4404668	2.52					
		350	超级聚氨酯(红色) Super polyurethane(Magenta)	滚柱 Roller bearing	4404553	2.50					
				滚珠 Ball bearing	4404684	2.52					
		360	V型槽铸铁 V-Groove cast-iron	滚柱 Roller bearing	4404566	4.01					
		350	铁芯聚氨酯 Iron centre polyurethane	滚柱 Roller bearing	4404636	3.43					
		280	高强度聚氨酯烽火 High-strength polyurethane flame	滚珠 Ball bearing	4404748	2.46					
		350	超级聚氨酯(黑色) Super polyurethane(Black)	滚柱 Roller bearing	4404764	2.50					
滚珠 Ball bearing	4404780			2.52							
460	耐高温 High-heat resistant	滚珠 Ball bearing	4404796	2.68							
150	50	420	铸铁 Cast-iron	滚柱 Roller bearing	4404479	4.35	193	114X100	84X71	11	114
		285	高强度人造胶 High-strength artificial rubber	滚柱 Roller bearing	4404514	2.75					
				滚珠 Ball bearing	4404669	2.77					
		410	超级聚氨酯(红色) Super polyurethane(Magenta)	滚柱 Roller bearing	4404554	2.75					
				滚珠 Ball bearing	4404685	2.77					
		420	V型槽铸铁 V-Groove cast-iron	滚柱 Roller bearing	4404567	5.20					
		410	铁芯聚氨酯 Iron centre polyurethane	滚柱 Roller bearing	4404637	3.91					
		320	高强度聚氨酯烽火 High-strength polyurethane flame	滚珠 Ball bearing	4404749	2.73					
		410	超级聚氨酯(黑色) Super polyurethane(Black)	滚柱 Roller bearing	4404765	2.75					
滚珠 Ball bearing	4404781			2.77							
480	耐高温 High-heat resistant	滚珠 Ball bearing	4404797	3.01							
200	50	430	铸铁 Cast-iron	滚柱 Roller bearing	4404480	5.81	243	114X100	84X71	11	149
		310	高强度人造胶 High-strength artificial rubber	滚柱 Roller bearing	4404515	3.32					
				滚珠 Ball bearing	4404670	3.46					
		420	超级聚氨酯(红色) Super polyurethane(Magenta)	滚柱 Roller bearing	4404555	3.32					
				滚珠 Ball bearing	4404686	3.46					
		430	V型槽铸铁 V-Groove cast-iron	滚柱 Roller bearing	4404568	6.07					
		420	铁芯聚氨酯 Iron centre polyurethane	滚柱 Roller bearing	4404638	5.05					
		350	高强度聚氨酯烽火 High-strength polyurethane flame	滚珠 Ball bearing	4404750	3.37					
		420	超级聚氨酯(黑色) Super polyurethane(Black)	滚柱 Roller bearing	4404766	3.32					
滚珠 Ball bearing	4404782			3.46							
510	耐高温 High-heat resistant	滚珠 Ball bearing	4404798	3.82							



4404685



4404749



4404781



4404479

4系列—打气活动、固定轮 4Series—Swivel & Rigid Penumatic caster


4404528A

轮径 Wheel Dia. (mm)	轮宽 Wheel width (mm)	承载 Load capacity (kg)	单轮材料 Material of Wheel	轴承 Bearing	编号 Code No		活动重量 swivel N.W. (kg)	固定重量 rigid N.W. (kg)	安装高度 Load height (mm)	底板规格 Top plate size (mm)	孔距 Bolt hole spacing (mm)	孔径 Bolt hole Dia. (mm)	转动半径 Swivel radius (mm)
					活动 Swivel	固定 Rigid							
200	64	125	橡胶 Rubber	滚珠 Ball bearing	4404528	4404529	2.75	2.28	258	114X100	84X71	11	156
250	86	136	橡胶 Rubber	滚珠 Ball bearing	4404531	4404532	3.16	2.67	308	114X100	84X71	11	189

4系列—鹰架刹制轮 4Series—Scaffold caster


4404734

轮径 Wheel Dia. (mm)	轮宽 Wheel width (mm)	承载 Load capacity (kg)	单轮材料 Material of Wheel	轴承 Bearing	编号 Code No.	重量 N.W. (kg)	安装高度 Load height (mm)	插杆规格 Bolt stem size (mm)	插杆孔径 Bolt hole stem Dia. (mm)	转动半径 Swivel radius (mm)
		410	超级聚氨酯 Super polyurethane	滚柱 Roller bearing	4404733	3.61				
200	50	380	铁芯橡胶 Rubber with iron core	滚柱 Roller bearing	4404728	5.61	237	100X35	13	153
		420	超级聚氨酯 Super polyurethane	滚柱 Roller bearing	4404734	4.39				

4系列—高强度橡胶活动、双刹轮
4Series—Swivel & Swivel with dual barke High strength rubber caster


4404820

轮径 Wheel Dia. (mm)	轮宽 Wheel width (mm)	承载 Load capacity (kg)	单轮材料 Material of Wheel	轴承 Bearing	编号 Code No		活动重量 swivel N.W. (kg)	双刹重量 dual brake N.W. (kg)	安装高度 Load height (mm)	底板规格 Top plate size (mm)	孔距 Bolt hole spacing (mm)	孔径 Bolt hole Dia. (mm)	转动半径 Swivel radius (mm)
					活动 Swivel	刹制 dual brake							
200	45	500	高强度橡胶 Intensified rubber	滚珠 Ball bearing	4404808	4404820	4.03	4.25	250	140X140	110X110	11.5	160

4系列—高强度橡胶固定轮
4Series—Rigid High strength rubber caster


4404809

轮径 Wheel Dia. (mm)	轮宽 Wheel width (mm)	承载 Load capacity (kg)	单轮材料 Material of Wheel	轴承 Bearing	编号 Code No.	重量 N.W. (kg)	安装高度 Load height (mm)	底板规格 Top plate size (mm)	孔距 Bolt hole spacing (mm)	孔径 Bolt hole Dia. (mm)

4系列—超重型—超级聚氨酯活动、固定轮
4Series—Extra heavy duty— Swivel & Rigid super polyurethane caster


4404823

轮径 Wheel Dia. (mm)	轮宽 Wheel width (mm)	承载 Load capacity (kg)	单轮材料 Material of Wheel	轴承 Bearing	编号 Code No		活动重量 swivel N.W. (kg)	固定重量 rigid N.W. (kg)	安装高度 Load height (mm)	底板规格 Top plate size (mm)	孔距 Bolt hole spacing (mm)	孔径 Bolt hole Dia. (mm)	转动半径 Swivel radius (mm)
					活动 Swivel	固定 Rigid							
200	64	650	超级聚氨酯 Super polyurethane	滚珠 Ball bearing	4404823	4404824	5.23	4.17	260	168X120	130X75	13.5	157


4404933

- 專利產品 (專利號: PAT200430044164.1)
- 產品用途: 適用於各種行業牽引車使用, 尤其是汽車製造廠、玻璃廠、紡織廠、酒廠、輪胎廠等。
- Patent (Patent No: PAT200430044164.1)
- Product Applications: Globe Castor uses for any kinds of the traction car in many industries, In particular, Carmaker, Glasswork, Textile Mill, Wine plant, Tire plant, etc.

4系列-防震活動輪
4Series- Shock proof caster-Swivel

輪徑 Wheel Dia. (mm)	輪寬 Wheel width (mm)	承載 Load capacity (kg)	單輪材料 Material of Wheel	軸承 Bearing	編號 Code No.	重量 N.W. (kg)	安裝高度 Load height (mm)	底板規格 Top plate size (mm)	孔距 Bolt hole spacing (mm)	孔徑 Bolt hole Dia. (mm)	轉動半徑 Swivel radius (mm)	彈簧預張力 Primary tension of spring (kg)	彈簧極限張力 Max. tension of spring (kg)	彈簧行程 Spring Distance (mm)
125	50	300	鋁芯橡膠 Aluminium centre rubber	滾珠 Ball bearing	4404930	5.66	186	158X114	128X73	13	112	50	300	10
150	50	350	鋁芯橡膠 Aluminium centre rubber	滾珠 Ball bearing	4404933	6.03	198	158X114	128X73	13	125	50	350	10
200	50	400	鋁芯橡膠 Aluminium centre rubber	滾珠 Ball bearing	4404936	7.26	248	158X114	128X73	13	163	50	400	10


4404934

- 專利產品 (專利號: PAT200430044166.0)
- 產品用途: 適用於各種行業牽引車使用, 尤其是汽車製造廠、玻璃廠、紡織廠、酒廠、輪胎廠等。
- Patent (Patent No: PAT200430044166.0)
- Product Applications: Globe Castor uses for any kinds of the traction car in many industries, In particular, Carmaker, Glasswork, Textile Mill, Wine plant, Tire plant, etc.

4系列-防震固定輪
4Series- Shock proof caster-Rigid

輪徑 Wheel Dia. (mm)	輪寬 Wheel width (mm)	承載 Load capacity (kg)	單輪材料 Material of Wheel	軸承 Bearing	編號 Code No.	重量 N.W. (kg)	安裝高度 Load height (mm)	底板規格 Top plate size (mm)	孔距 Bolt hole spacing (mm)	孔徑 Bolt hole Dia. (mm)	彈簧預張力 Primary tension of spring (kg)	彈簧極限張力 Max. tension of spring (kg)	彈簧行程 Spring Distance (mm)
125	50	300	鋁芯橡膠 Aluminium centre rubber	滾珠 Ball bearing	4404931	4.95	186	158X114	128X73	13	50	300	10
150	50	350	鋁芯橡膠 Aluminium centre rubber	滾珠 Ball bearing	4404934	5.41	198	158X114	128X73	13	50	350	10
200	50	400	鋁芯橡膠 Aluminium centre rubber	滾珠 Ball bearing	4404937	6.91	248	158X114	128X73	13	50	400	10

5系列—平底型—活動式 5Series-Top plate type-Swivel


5505534



5505510

轮径 Wheel Dia. (mm)	轮宽 Wheel width (mm)	承载 Load capacity (kg)	单轮材料 Material of Wheel	轴承 Bearing	编号 Code No.	重量 N.W. (kg)	安装高度 Load height (mm)	底板规格 Top plate size (mm)	孔距 Bolt hole spacing (mm)	孔径 Bolt hole Dia. (mm)	转动半径 Swivel radius (mm)
100	50	400	高强度尼龙 High-strength Nylon	滚珠 Ball bearing	5505501	3.28	149	140x110	110x75	13	82
		350	超级聚氨酯 Super polyurethane	滚珠 Ball bearing	5505525	3.16					
		320	铁芯聚氨酯 Iron centre polyurethane	滚珠 Ball bearing	5505549						
		430	铸铁 Cast-iron	滚珠 Ball bearing	5505573						
125	50	450	高强度尼龙 High-strength Nylon	滚珠 Ball bearing	5505504	3.55	173	140x110	110x75	13	98
		400	超级聚氨酯 Super polyurethane	滚珠 Ball bearing	5505528	3.48					
		350	铁芯聚氨酯 Iron centre polyurethane	滚珠 Ball bearing	5505552						
		480	铸铁 Cast-iron	滚珠 Ball bearing	5505576						
150	50	550	高强度尼龙 High-strength Nylon	滚珠 Ball bearing	5505507	4.11	199	140x110	110x75	13	113
		500	超级聚氨酯 Super polyurethane	滚珠 Ball bearing	5505531	4.02					
		420	铁芯聚氨酯 Iron centre polyurethane	滚珠 Ball bearing	5505555						
		590	铸铁 Cast-iron	滚珠 Ball bearing	5505579						
200	50	650	高强度尼龙 High-strength Nylon	滚珠 Ball bearing	5505510	4.60	250	140x110	110x75	13	147
		600	超级聚氨酯 Super polyurethane	滚珠 Ball bearing	5505534	4.72					
		530	铁芯聚氨酯 Iron centre polyurethane	滚珠 Ball bearing	5505558						
		680	铸铁 Cast-iron	滚珠 Ball bearing	5505582						
250	64	850	高强度尼龙 High-strength Nylon	滚珠 Ball bearing	5505513		298	180x140	150x100	13	193
		800	超级聚氨酯 Super polyurethane	滚珠 Ball bearing	5505537						
		750	铁芯聚氨酯 Iron centre polyurethane	滚珠 Ball bearing	5505561						
		900	铸铁 Cast-iron	滚珠 Ball bearing	5505585						
300	64	1150	高强度尼龙 High-strength Nylon	滚珠 Ball bearing	5505516		348	180x140	150x100	13	224
		1100	超级聚氨酯 Super polyurethane	滚珠 Ball bearing	5505540						
		1000	铁芯聚氨酯 Iron centre polyurethane	滚珠 Ball bearing	5505564						
		1200	铸铁 Cast-iron	滚珠 Ball bearing	5505588						

5系列—平底型—固定式 5Series-Top plate type-Rigid


5505559

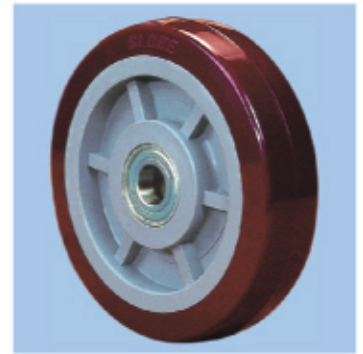


5505583

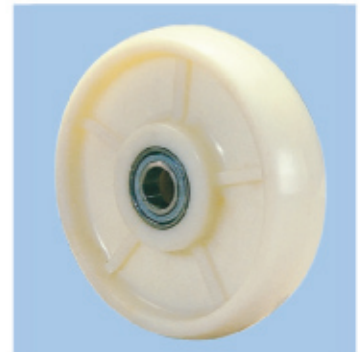
轮径 Wheel Dia. (mm)	轮宽 Wheel width (mm)	承载 Load capacity (kg)	单轮材料 Material of Wheel	轴承 Bearing	编号 Code No.	重量 N.W. (kg)	安装高度 Load height (mm)	底板规格 Top plate size (mm)	孔距 Bolt hole spacing (mm)	孔径 Bolt hole Dia. (mm)
100	50	400	高强度尼龙 High-strength Nylon	滚珠 Ball bearing	5505502	2.48	149	140x110	110x75	13
		350	超级聚氨酯 Super polyurethane	滚珠 Ball bearing	5505526	2.46				
		320	铁芯聚氨酯 Iron centre polyurethane	滚珠 Ball bearing	5505550					
		430	铸铁 Cast-iron	滚珠 Ball bearing	5505574					
125	50	450	高强度尼龙 High-strength Nylon	滚珠 Ball bearing	5505505	2.80	173	140x110	110x75	13
		400	超级聚氨酯 Super polyurethane	滚珠 Ball bearing	5505529	2.75				
		350	铁芯聚氨酯 Iron centre polyurethane	滚珠 Ball bearing	5505553					
		480	铸铁 Cast-iron	滚珠 Ball bearing	5505577					
150	50	550	高强度尼龙 High-strength Nylon	滚珠 Ball bearing	5505508	3.29	199	140x110	110x75	13
		500	超级聚氨酯 Super polyurethane	滚珠 Ball bearing	5505532	3.28				
		420	铁芯聚氨酯 Iron centre polyurethane	滚珠 Ball bearing	5505556					
		590	铸铁 Cast-iron	滚珠 Ball bearing	5505580					
200	50	650	高强度尼龙 High-strength Nylon	滚珠 Ball bearing	5505511	3.98	250	140x110	110x75	13
		600	超级聚氨酯 Super polyurethane	滚珠 Ball bearing	5505535	4.06				
		530	铁芯聚氨酯 Iron centre polyurethane	滚珠 Ball bearing	5505559					
		680	铸铁 Cast-iron	滚珠 Ball bearing	5505583					
250	64	850	高强度尼龙 High-strength Nylon	滚珠 Ball bearing	5505514		298	180x140	150x100	13
		800	超级聚氨酯 Super polyurethane	滚珠 Ball bearing	5505538					
		750	铁芯聚氨酯 Iron centre polyurethane	滚珠 Ball bearing	5505562					
		900	铸铁 Cast-iron	滚珠 Ball bearing	5505586					
300	64	1150	高强度尼龙 High-strength Nylon	滚珠 Ball bearing	5505517		348	180x140	150x100	13
		1100	超级聚氨酯 Super polyurethane	滚珠 Ball bearing	5505541					
		1000	铁芯聚氨酯 Iron centre polyurethane	滚珠 Ball bearing	5505565					
		1200	铸铁 Cast-iron	滚珠 Ball bearing	5505589					

6系列—尼龙单轮、超级聚氨酯单轮、铁芯聚氨酯单轮
6Series—Nylon, Super polyurethane, Iron centre Polyurethane single wheel

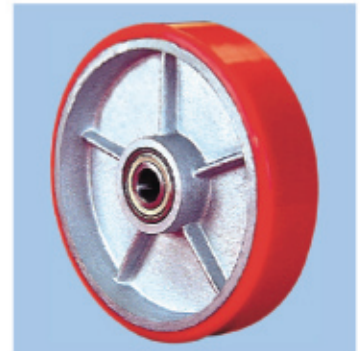
轮径 Wheel Dia. (mm)	轮宽 Wheel width (mm)	承载 Load capacity (kg)	单轮材料 Material of Wheel	轴承 Bearing	单轮编号 Code No.	单轮重量 N.W. (kg)	轴承型号 Bearing model	轴承直径 Bearing outside dia. (mm)	轴承孔径 Bearing bore dia. (mm)		
100	50	300	尼龙(黄色) Nylon(Yellow)	滚珠 Ball bearing	6606607	0.48	6203	40	17		
		400	高强度尼龙(白色) High-strength Nylon(White)	滚珠 Ball bearing	6606622						
		320	铁芯聚氨酯 Iron centre polyurethane	滚珠 Ball bearing	6606637						
		350	超级聚氨酯 Super polyurethane	滚珠 Ball bearing	6606652						
125	50	300	尼龙(黄色) Nylon(Yellow)	滚珠 Ball bearing	6606608	0.70	6203	40	17		
		450	高强度尼龙(白色) High-strength Nylon(White)	滚珠 Ball bearing	6606623						
		350	铁芯聚氨酯 Iron centre polyurethane	滚珠 Ball bearing	6606638						
		400	超级聚氨酯 Super polyurethane	滚珠 Ball bearing	6606653						
150	50	400	尼龙(黄色) Nylon(Yellow)	滚珠 Ball bearing	6606609	0.67	6204	47	20		
				滚珠 Ball bearing	6606610	0.70	6205	52	25		
		550	高强度尼龙(白色) High-strength Nylon(White)	滚珠 Ball bearing	6606624	0.83	6204	47	20		
				滚珠 Ball bearing	6606625	0.88	6205	52	25		
		420	铁芯聚氨酯 Iron centre polyurethane	滚珠 Ball bearing	6606639		6204	47	20		
				滚珠 Ball bearing	6606640		6205	52	25		
		500	超级聚氨酯 Super polyurethane	滚珠 Ball bearing	6606654	0.89	6204	47	20		
				滚珠 Ball bearing	6606655	0.94	6205	52	25		
		200	50	500	尼龙(黄色) Nylon(Yellow)	滚珠 Ball bearing	6606611	0.90	6204	47	20
						滚珠 Ball bearing	6606612	0.95	6205	52	25
650	高强度尼龙(白色) High-strength Nylon(White)			滚珠 Ball bearing	6606626	1.14	6204	47	20		
				滚珠 Ball bearing	6606627	1.18	6205	52	25		
550	铁芯聚氨酯 Iron centre polyurethane			滚珠 Ball bearing	6606641		6204	47	20		
				滚珠 Ball bearing	6606642		6205	52	25		
600	超级聚氨酯 Super polyurethane			滚珠 Ball bearing	6606656	1.35	6204	47	20		
				滚珠 Ball bearing	6606657	1.38	6205	52	25		
250	64	600	尼龙(黄色) Nylon(Yellow)	滚珠 Ball bearing	6606613	1.31	6205	52	25		
		850	高强度尼龙(白色) High-strength Nylon(White)	滚珠 Ball bearing	6606628						
		750	铁芯聚氨酯 Iron centre polyurethane	滚珠 Ball bearing	6606643						
		800	超级聚氨酯 Super polyurethane	滚珠 Ball bearing	6606658						
300	50	800	尼龙(黄色) Nylon(Yellow)	滚珠 Ball bearing	6606614	1.69	6205	52	25		
				滚珠 Ball bearing	6606615	1.81	6206	62	30		
	1150	高强度尼龙(白色) High-strength Nylon(White)	滚珠 Ball bearing	6606629		6205	52	25			
			滚珠 Ball bearing	6606630		6206	62	30			
	64	1000	铁芯聚氨酯 Iron centre polyurethane	滚珠 Ball bearing	6606644		6205	52	25		
				滚珠 Ball bearing	6606645		6206	62	30		
	1100	超级聚氨酯 Super polyurethane	滚珠 Ball bearing	6606659		6205	52	25			
			滚珠 Ball bearing	6606660		6206	62	30			



6606656



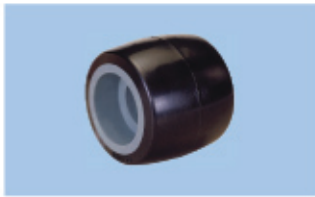
6606626



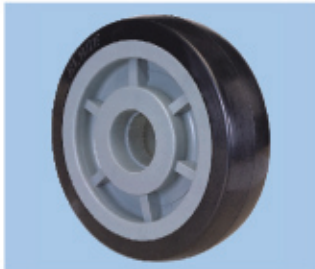
6606641



6606611

7系列—高强度聚氨脂叉车轮 **7Series-High strength polyurethane fork lift castor**


7707712



7707716

轮径 Wheel Dia. (mm)	轮宽 Wheel width (mm)	承载 Load capacity (kg)	单轮材料 Material of Wheel	轴承 Bearing	单轮编号 Code No.	单轮重量 N.W. (kg)	轴承型号 Bearing model	轴承直径 Bearing outside dia. (mm)	轴承孔径 Bearing bore dia. (mm)
82	70	400	高强度聚氨脂叉车前轮 High strength polyurethane fork lift front castor	滚珠 Ball bearing	7707712	0.29	6204	47	20
180	50	550	高强度聚氨脂叉车后轮 High strength polyurethane fork lift rear castor	滚珠 Ball bearing	7707716	0.93	6204	47	20
200	50	600	高强度聚氨脂叉车后轮 High strength polyurethane fork lift rear castor	滚珠 Ball bearing	7707717	1.13			

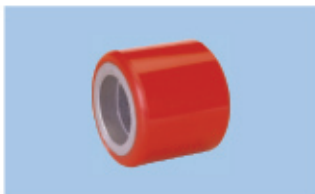
7系列—高强度尼龙叉车轮 **7Series-High strength nylon fork lift castor**


7707718



7707722

轮径 Wheel Dia. (mm)	轮宽 Wheel width (mm)	承载 Load capacity (kg)	单轮材料 Material of Wheel	轴承 Bearing	单轮编号 Code No.	单轮重量 N.W. (kg)	轴承型号 Bearing model	轴承直径 Bearing outside dia. (mm)	轴承孔径 Bearing bore dia. (mm)
80	68	400	高强度尼龙叉车前轮 High strength nylon fork lift front castor	滚珠 Ball bearing	7707718	0.23	6204	47	20
	75	400	高强度尼龙叉车前轮 High strength nylon fork lift front castor	滚珠 Ball bearing	7707719	0.24			
	80	450	高强度尼龙叉车前轮 High strength nylon fork lift front castor	滚珠 Ball bearing	7707720	0.28			
	95	500	高强度尼龙叉车前轮 High strength nylon fork lift front castor	滚珠 Ball bearing	7707721	0.32			
180	50	600	高强度尼龙叉车后轮 High strength nylon fork lift rear castor	滚珠 Ball bearing	7707722	0.78	6204	47	20
200	50	650	高强度尼龙叉车后轮 High strength nylon fork lift rear castor	滚珠 Ball bearing	7707723	0.70			

7系列—铁芯聚氨脂叉车轮 **7Series-Iron centre polyurethane fork lift castor**


7707726



7707731

轮径 Wheel Dia. (mm)	轮宽 Wheel width (mm)	承载 Load capacity (kg)	单轮材料 Material of Wheel	轴承 Bearing	单轮编号 Code No.	单轮重量 N.W. (kg)	轴承型号 Bearing model	轴承直径 Bearing outside dia. (mm)	轴承孔径 Bearing bore dia. (mm)
80	50	350	铁芯聚氨脂叉车前轮 Iron centre polyurethane fork lift front castor	滚珠 Ball bearing	7707724	0.69	6204	47	20
	60	350	铁芯聚氨脂叉车前轮 Iron centre polyurethane fork lift front castor	滚珠 Ball bearing	7707725	0.80			
	70	400	铁芯聚氨脂叉车前轮 Iron centre polyurethane fork lift front castor	滚珠 Ball bearing	7707726	0.99			
	80	450	铁芯聚氨脂叉车前轮 Iron centre polyurethane fork lift front castor	滚珠 Ball bearing	7707727	1.18			
	90	500	铁芯聚氨脂叉车前轮 Iron centre polyurethane fork lift front castor	滚珠 Ball bearing	7707728	1.32			
	100	500	铁芯聚氨脂叉车前轮 Iron centre polyurethane fork lift front castor	滚珠 Ball bearing	7707729	1.51			
180	50	550	铁芯聚氨脂叉车后轮 Iron centre polyurethane fork lift rear castor	滚珠 Ball bearing	7707730	2.58	6204	47	20
200	50	600	铁芯聚氨脂叉车后轮 Iron centre polyurethane fork lift rear castor	滚珠 Ball bearing	7707731	3.24			

8系列—平底型—活动肥仔轮 8Series-Top plate type-Swivel

轮径 Wheel Dia. (mm)	轮宽 Wheel width (mm)	承载 Load capacity (kg)	单轮材料 Material of Wheel	轴承 Bearing	编号 Code No.	重量 N.W. (kg)	安装高度 Load height (mm)	底板规格 Top plate size (mm)	孔距 Bolt hole spacing (mm)	孔径 Bolt hole Dia. (mm)	转动半径 Swivel radius (mm)
38	24	35	橡胶 Rubber	轴承 Bushing	8808026	0.14	51	61X44	48X23	6.5	34
		40	尼龙 Nylon	轴承 Bushing	8808046	0.11					
50	24	42	橡胶 Rubber	轴承 Bushing	8808029	0.19	65	66X48	54X24	6.5	39
		53	尼龙 Nylon	轴承 Bushing	8808049	0.16					
65	28	50	橡胶 Rubber	轴承 Bushing	8808032	0.44	85	98X70	76X44	9	55
		60	尼龙 Nylon	轴承 Bushing	8808052	0.38					
75	30	63	橡胶 Rubber	轴承 Bushing	8808035	0.61	95	105X80	87X60	9	70
		70	尼龙 Nylon	轴承 Bushing	8808055	0.49					



8808055

8系列—平底型—固定肥仔轮 8Series-Top plate type-Rigid

轮径 Wheel Dia. (mm)	轮宽 Wheel width (mm)	承载 Load capacity (kg)	单轮材料 Material of Wheel	轴承 Bearing	编号 Code No.	重量 N.W. (kg)	安装高度 Load height (mm)	底板规格 Top plate size (mm)	孔距 Bolt hole spacing (mm)	孔径 Bolt hole Dia. (mm)
38	24	35	橡胶 Rubber	轴承 Bushing	8808027	0.10	52	61X38	48X23	6.5
		40	尼龙 Nylon	轴承 Bushing	8808047	0.08				
50	24	42	橡胶 Rubber	轴承 Bushing	8808030	0.16	65	66X44	54X24	6.5
		53	尼龙 Nylon	轴承 Bushing	8808050	0.12				
65	28	50	橡胶 Rubber	轴承 Bushing	8808033	0.31	85	98X54	81X25	9
		60	尼龙 Nylon	轴承 Bushing	8808053	0.24				
75	30	63	橡胶 Rubber	轴承 Bushing	8808036	0.49	95	102X61	85X36	9
		70	尼龙 Nylon	轴承 Bushing	8808056	0.36				



8808036

8系列—平底型—单边刹制肥仔轮 8Series-Top plate type- with side brake

轮径 Wheel Dia. (mm)	轮宽 Wheel width (mm)	承载 Load capacity (kg)	单轮材料 Material of Wheel	轴承 Bearing	编号 Code No.	重量 N.W. (kg)	安装高度 Load height (mm)	底板规格 Top plate size (mm)	孔距 Bolt hole spacing (mm)	孔径 Bolt hole Dia. (mm)	转动半径 Swivel radius (mm)
50	24	42	橡胶 Rubber	轴承 Bushing	8808042	0.21	65	66X48	54X24	6.5	39
		53	尼龙 Nylon	轴承 Bushing	8808062	0.18					
65	28	50	橡胶 Rubber	轴承 Bushing	8808043	0.47	85	98X70	76X44	9	55
		60	尼龙 Nylon	轴承 Bushing	8808063	0.40					
75	30	63	橡胶 Rubber	轴承 Bushing	8808044	0.66	95	105X80	87X60	9	70
		70	尼龙 Nylon	轴承 Bushing	8808064	0.54					



8808044

EG1系列-平底型-活动式/固定式 EG1 Series-Top plate type-Swivel/Rigid



活动高级聚氨酯轮
Swivel high-class polyurethane castor



固定高级聚氨酯轮
Rigid high-class polyurethane castor



双刹美力轮
Swivel with dual brake Meili castor



边刹超静聚氨酯轮
Swivel with unilateral brake super-muting polyurethane castor

规格 Size	编 号 Code No.				 轮径 Wheel diameter (mm)	 轮宽 Wheel width (mm)	 承载 Load capacity (kg)	 单轮材料 Single wheel material	 轴承 Bearing	 安装 高度 Setting height (mm)	 活动转 动半径 Radius of swivel (mm)	 双刹转 动半径 Radius of swivel (mm)	 底板 Top plate spec (mm)	 孔径 Aperture (mm)	 孔径 Pitch (mm)
	活 动 Swivel	固 定 Rigid	双刹活动 Swivel with dual brake	边刹活动 Swivel with unilateral brake											
4"	EG01-11-100S-302	EG01-11-100R-302	EG01-11-100SA-302	EG01-11-100SB-302	100	38	180	高级聚氨酯 High-class polyurethane	滚珠 ball bearing	140	93	135	114X100	84X71	11
	EG01-11-100S-208	EG01-11-100R-208	EG01-11-100SA-208	EG01-11-100SB-208			280	美力 Meili							
	EG01-11-100S-309	EG01-11-100R-309	EG01-11-100SA-309	EG01-11-100SB-309			130	超静聚氨酯 Super-muting polyurethane							
5"	EG01-11-125S-302	EG01-11-125R-302	EG01-11-125SA-302	EG01-11-125SB-302	125	38	250	高级聚氨酯 High-class polyurethane	滚珠 ball bearing	165	105	138	114X100	84X71	11
	EG01-11-125S-208	EG01-11-125R-208	EG01-11-125SA-208	EG01-11-125SB-208			350	美力 Meili							
	EG01-11-125S-309	EG01-11-125R-309	EG01-11-125SA-309	EG01-11-125SB-309			160	超静聚氨酯 Super-muting polyurethane							
6"	EG01-11-150S-302	EG01-11-150R-302	EG01-11-150SA-302	EG01-11-150SB-302	150	40	300	高级聚氨酯 High-class polyurethane	滚珠 ball bearing	190	118	148	114X100	84X71	11
	EG01-11-150S-208	EG01-11-150R-208	EG01-11-150SA-208	EG01-11-150SB-208			410	美力 Meili							
	EG01-11-150S-309	EG01-11-150R-309	EG01-11-150SA-309	EG01-11-150SB-309			180	超静聚氨酯 Super-muting polyurethane							
8"	EG01-11-200S-302	EG01-11-200R-302	EG01-11-200SA-302	EG01-11-200SB-302	200	45	350	高级聚氨酯 High-class polyurethane	滚珠 ball bearing	240	145	153	114X100	84X71	11
	EG01-11-200S-208	EG01-11-200R-208	EG01-11-200SA-208	EG01-11-200SB-208			420	美力 Meili							
	EG01-11-200S-309	EG01-11-200R-309	EG01-11-200SA-309	EG01-11-200SB-309			220	超静聚氨酯 Super-muting polyurethane							



高级聚氨酯轮
High-class polyurethane wheel



美力轮
Meili wheel



超静聚氨酯轮
Super-muting polyurethane wheel

EG1系列-丝杆型-活动式 EG1 Series-Link pin type-Swivel



丝杆活动高级聚氨酯轮
Swivel with link pin high-class polyurethane castor



丝杆双刹美力轮
Swivel with dual brake Meili castor



丝杆边刹超静聚氨酯轮
Swivel with unilateral brake super-muting polyurethane castor

规格 Size	编号 Code No.											
	丝杆活动 Swivel with link pin	丝杆双刹 Swivel with dual brake	丝杆边刹 Swivel with unilateral brake									
4"	EG01-11-100M-302	EG01-11-100MA-302	EG01-11-100MB-302	100	38	180	高级聚氨酯 High-class polyurethane	滚珠 Ball bearing	145	93	135	16X40 (20X40)
	EG01-11-100M-208	EG01-11-100MA-208	EG01-11-100MB-208			280	美力 Meili					
	EG01-11-100M-309	EG01-11-100MA-309	EG01-11-100MB-309			130	超静聚氨酯 Super-muting polyurethane					
5"	EG01-11-125M-302	EG01-11-125MA-302	EG01-11-125MB-302	125	38	250	高级聚氨酯 High-class polyurethane	滚珠 Ball bearing	170	105	138	16X40 (20X40)
	EG01-11-125M-208	EG01-11-125MA-208	EG01-11-125MB-208			350	美力 Meili					
	EG01-11-125M-309	EG01-11-125MA-309	EG01-11-125MB-309			160	超静聚氨酯 Super-muting polyurethane					
6"	EG01-11-150M-302	EG01-11-150MA-302	EG01-11-150MB-302	150	40	300	高级聚氨酯 High-class polyurethane	滚珠 Ball bearing	195	118	148	16X40 (20X40)
	EG01-11-150M-208	EG01-11-150MA-208	EG01-11-150MB-208			410	美力 Meili					
	EG01-11-150M-309	EG01-11-150MA-309	EG01-11-150MB-309			180	超静聚氨酯 Super-muting polyurethane					
8"	EG01-11-200M-302	EG01-11-200MA-302	EG01-11-200MB-302	200	45	350	高级聚氨酯 High-class polyurethane	滚珠 Ball bearing	245	145	153	16X40 (20X40)
	EG01-11-200M-208	EG01-11-200MA-208	EG01-11-200MB-208			420	美力 Meili					
	EG01-11-200M-309	EG01-11-200MA-309	EG01-11-200MB-309			220	超静聚氨酯 Super-muting polyurethane					

EG1系列-插杆型-活动式 EG1 Series-Stem type-Swivel



插杆活动高级聚氨脂轮
 Swivel with stem high-class polyurethane castor



插杆双刹高级聚氨脂轮
 Swivel with dual brake high-class polyurethane castor



插杆边刹美力轮
 Swivel with unilateral brake Meili castor

规格 Size	编号 Code No.			轮径 Wheel diameter (mm)	轮宽 Wheel width (mm)	承载 Load capacity (kg)	单轮材料 Single wheel material	轴承 Bearing	安装高度 Setting height (mm)	插杆活动 转动半径 Swivel Radius of rotation (mm)	插杆双刹 转动半径 Dual brake Radius of rotation (mm)	插杆规格 Stem spec. (mm)
	插杆活动 Swivel with stem	插杆双刹 Swivel with dual brake	插杆边刹 Swivel with unilateral brake									
4"	EG01-11-100H-302	EG01-11-100HA-302	EG01-11-100HB-302	100	38	180	高级聚氨脂 High-class polyurethane	滚珠 Ball bearing	140	93	135	35X100
	EG01-11-100H-208	EG01-11-100HA-208	EG01-11-100HB-208			280	美力 Meili					
5"	EG01-11-125H-302	EG01-11-125HA-302	EG01-11-125HB-302	125	38	250	高级聚氨脂 High-class polyurethane	滚珠 Ball bearing	165	105	138	35X100
	EG01-11-125H-208	EG01-11-125HA-208	EG01-11-125HB-208			350	美力 Meili					
6"	EG01-11-150H-302	EG01-11-150HA-302	EG01-11-150HB-302	150	40	300	高级聚氨脂 High-class polyurethane	滚珠 Ball bearing	190	118	148	35X100
	EG01-11-150H-208	EG01-11-150HA-208	EG01-11-150HB-208			410	美力 Meili					
8"	EG01-11-200H-302	EG01-11-200HA-302	EG01-11-200HB-302	200	45	350	高级聚氨脂 High-class polyurethane	滚珠 Ball bearing	240	145	153	35X100
	EG01-11-200H-208	EG01-11-200HA-208	EG01-11-200HB-208			420	美力 Meili					

TD1系列-平底型-活动式 TD1 Series-Top plate type-Swivel

活动钢芯橡胶轮
 Swivel steel-core rubber castor

双刹美静聚氨酯轮
 Swivel with dual brake Meijing polyurethane castor

边刹超静聚氨酯轮
 Swivel with unilateral brake super-muting polyurethane castor

规格 Size	编号 Code No.			轮径 Wheel diameter (mm)	轮宽 Wheel width (mm)	承载 Load capacity (kg)	单轮材料 Single wheel material	轴承 Bearing	安装高度 Setting height (mm)	活动转动半径 Swivel Radius of rotation (mm)	双刹转动半径 Dual brake Radius of rotation (mm)	底板 Top plate spec (mm)	孔距 Aperture (mm)	孔径 Pitch (mm)
	活动 Swivel	双刹活动 Swivel with dual brake	边刹活动 Swivel with unilateral brake											
4"	TD01-11-100S-606	TD01-11-100SA-606	TD01-11-100SB-606	100	38	150	钢芯橡胶 Steel-core rubber	滚珠 Ball bearing	140	93	135	102X102	75X75 (80X80)	11
	TD01-11-100S-317	TD01-11-100SA-317	TD01-11-100SB-317			180	美静聚氨酯 Meijing polyurethane							
	TD01-11-100S-309	TD01-11-100SA-309	TD01-11-100SB-309			130	超静聚氨酯 Super-muting polyurethane							
5"	TD01-11-125S-606	TD01-11-125SA-606	TD01-11-125SB-606	125	38	160	钢芯橡胶 Steel-core rubber	滚珠 Ball bearing	165	105	138	102X102	75X75 (80X80)	11
	TD01-11-125S-317	TD01-11-125SA-317	TD01-11-125SB-317			250	美静聚氨酯 Meijing polyurethane							
	TD01-11-125S-309	TD01-11-125SA-309	TD01-11-125SB-309			160	超静聚氨酯 Super-muting polyurethane							
6"	TD01-11-150S-606	TD01-11-150SA-606	TD01-11-150SB-606	150	40	180	钢芯橡胶 Steel-core rubber	滚珠 Ball bearing	190	118	148	102X102	75X75 (80X80)	11
	TD01-11-150S-317	TD01-11-150SA-317	TD01-11-150SB-317			300	美静聚氨酯 Meijing polyurethane							
	TD01-11-150S-309	TD01-11-150SA-309	TD01-11-150SB-309			180	超静聚氨酯 Super-muting polyurethane							
8"	TD01-11-200S-606	TD01-11-200SA-606	TD01-11-200SB-606	200	45	220	钢芯橡胶 Steel-core rubber	滚珠 Ball bearing	240	145	153	102X102	75X75 (80X80)	11
	TD01-11-200S-317	TD01-11-200SA-317	TD01-11-200SB-317			350	美静聚氨酯 Meijing polyurethane							
	TD01-11-200S-309	TD01-11-200SA-309	TD01-11-200SB-309			220	超静聚氨酯 Super-muting polyurethane							

TD1系列-平底型-固定式 TD1 Series-Top plate type-Rigid

固定钢芯橡胶轮
 Rigid steel-core rubber castor

规格 Size	编号 Code No.			轮径 Wheel diameter (mm)	轮宽 Wheel width (mm)	承载 Load capacity (kg)	单轮材料 Single wheel material	轴承 Bearing	安装高度 Setting height (mm)	底板 Top plate spec (mm)	孔距 Aperture (mm)	孔径 Pitch (mm)
	固定 Rigid											
4"	TD01-11-100R-606			100	38	150	钢芯橡胶 Steel-core rubber	滚珠 Ball bearing	140	140X94	100X56 (112X53)	11
	TD01-11-100R-317					180	美静聚氨酯 Meijing polyurethane					
	TD01-11-100R-309					130	超静聚氨酯 Super-muting polyurethane					
5"	TD01-11-125R-606			125	38	160	钢芯橡胶 Steel-core rubber	滚珠 Ball bearing	165	140X94	100X56 (112X53)	11
	TD01-11-125R-317					250	美静聚氨酯 Meijing polyurethane					
	TD01-11-125R-309					160	超静聚氨酯 Super-muting polyurethane					
6"	TD01-11-150R-606			150	40	180	钢芯橡胶 Steel-core rubber	滚珠 Ball bearing	190	140X94	100X56 (112X53)	11
	TD01-11-150R-317					300	美静聚氨酯 Meijing polyurethane					
	TD01-11-150R-309					180	超静聚氨酯 Super-muting polyurethane					
8"	TD01-11-200R-606			200	45	220	钢芯橡胶 Steel-core rubber	滚珠 Ball bearing	240	140X94	100X56 (112X53)	11
	TD01-11-200R-317					350	美静聚氨酯 Meijing polyurethane					
	TD01-11-200R-309					220	超静聚氨酯 Super-muting polyurethane					

TD1系列-丝杆型-活动式 TD1 Series-Link pin type-Swivel



丝杆活动钢芯橡胶轮
Swivel with link pin steel-core rubber castor



丝杆双刹钢芯橡胶轮
Swivel with dual brake steel-core rubber castor



丝杆边刹美静聚氨酯轮
Swivel with unilateral brake Meijing polyurethane castor

规格 Size	编号 Code No.			轮径 Wheel diameter (mm)	轮宽 Wheel width (mm)	承载 Load capacity (kg)	单轮材料 Single wheel material	轴承 Bearing	安装高度 Setting height (mm)	丝杆活动 转动半径 Swivel Radius of rotation (mm)	丝杆双刹 转动半径 Dual brake Radius of rotation (mm)	丝杆规格 Link pin spec. (mm)
	丝杆活动 Swivel with link pin	丝杆双刹 Swivel with dual brake	丝杆边刹 Swivel with unilateral brake									
4"	TD01-11-100M-606	TD01-11-100MA-606	TD01-11-100MB-606	100	38	150	钢芯橡胶 Steel-core rubber	滚珠 Ball bearing	145	93	135	16X40 (20X40)
	TD01-11-100M-317	TD01-11-100MA-317	TD01-11-100MB-317			180	美静聚氨酯 Meijing polyurethane					
5"	TD01-11-125M-606	TD01-11-125MA-606	TD01-11-125MB-606	125	38	160	钢芯橡胶 Steel-core rubber	滚珠 Ball bearing	170	105	138	16X40 (20X40)
	TD01-11-125M-317	TD01-11-125MA-317	TD01-11-125MB-317			250	美静聚氨酯 Meijing polyurethane					
6"	TD01-11-150M-606	TD01-11-150MA-606	TD01-11-150MB-606	150	40	180	钢芯橡胶 Steel-core rubber	滚珠 Ball bearing	195	118	148	16X40 (20X40)
	TD01-11-150M-317	TD01-11-150MA-317	TD01-11-150MB-317			300	美静聚氨酯 Meijing polyurethane					
8"	TD01-11-200M-606	TD01-11-200MA-606	TD01-11-200MB-606	200	45	220	钢芯橡胶 Steel-core rubber	滚珠 Ball bearing	245	145	153	16X40 (20X40)
	TD01-11-200M-317	TD01-11-200MA-317	TD01-11-200MB-317			350	美静聚氨酯 Meijing polyurethane					



钢芯橡胶轮
Steel-core rubber wheel



美静聚氨酯轮
Meijing polyurethane wheel



超静聚氨酯轮
Super-muting polyurethane wheel



本厂已在中国专利局注册多项产品专利
The factory has registered multiple items in China Paten Office

仿造必究

专利号: ZL99312599·9 ; ZL99312596·4 ; ZL99313301·0 ; ZL01319435·6 ; ZL01319437·2 ;
PATEN NO 02303957·4 ; ZL99312356·2 ; ZL99312355·4 ; ZL99312354·6 ; ZL99312350·3 ;
ZL99313093·3 ; ZL99313092·5 ; ZL01319442·9 ; ZL01352120·9 ; ZL99312600·6 ;
ZL01319436·4 ; ZL99312598·0 ; ZL99312595·6 ; ZL99312597·2 ; ZL99312594·8 ;



中國廣東省佛山市南海區環球工業腳輪廠

地址：中國廣東省佛山市南海區獅山科技工業園C區創業路12號
電話：0757-86692299 86692833 傳真：0757-86692988 郵編：528225
網址：<http://www.globe-castor.com> 電子信箱：master@globe-castor.com

Globe Industrial Castors Factory, Nanhai District, Foshan city, Guangdong, PRC

Address : #12 Chuangye Road, Area C, Shishan Science & Technology Industrial Zone,
Nanhai District, Foshan city, Guangdong, PRC

Tel : 0086-757-86692299 86692833 Fax : 0086-757-86692988 Post Code : 528225
Website : <http://www.globe-castor.com> E-mail : master@globe-castor.com

請联系当地销售部

